



# Wheathampstead Parish Council

Annual Parish Meeting 2017



# Agenda

## Annual Parish Meeting

Wednesday, 10<sup>th</sup> May 2017

Memorial Hall

Time	Item
7:30pm	Chairman's Welcome & Address
	Approval of Minutes
	Council Structure & Financial Report
	Review of 2016/17
	Plans for 2017/18
8:30pm	Questions & Refreshments
9:00pm	Recycling in St Albans Louise Palmer, Recycling and Waste Officer
10:00pm	Close



# Approval of Minutes





# Parish Councillors

Councillor	Note
Annie Brewster	District/County Cllr
Gill Clark	District Councillor
Adrian Dante	
David Davies	
Elias Habib	
Linda Halford	
Steve Haynes	
David Johnston	Chairman
Tessa Reason	
Judy Shardlow	
Paul Wilby	
Peter Woodhams	Vice-Chairman

We are responsible for the well-being of our Parish:

- We represent the parish's interests to others
- We deliver services to meet local needs
- We review 100s of planning applications
- We strive to improve the quality of life in the parish

We provide and maintain:

- Open spaces, playing fields, allotments & assets (170 Acres)
- The Memorial Hall
- Car parks and bus shelters
- Litter & dog waste bins
- Support for community initiatives



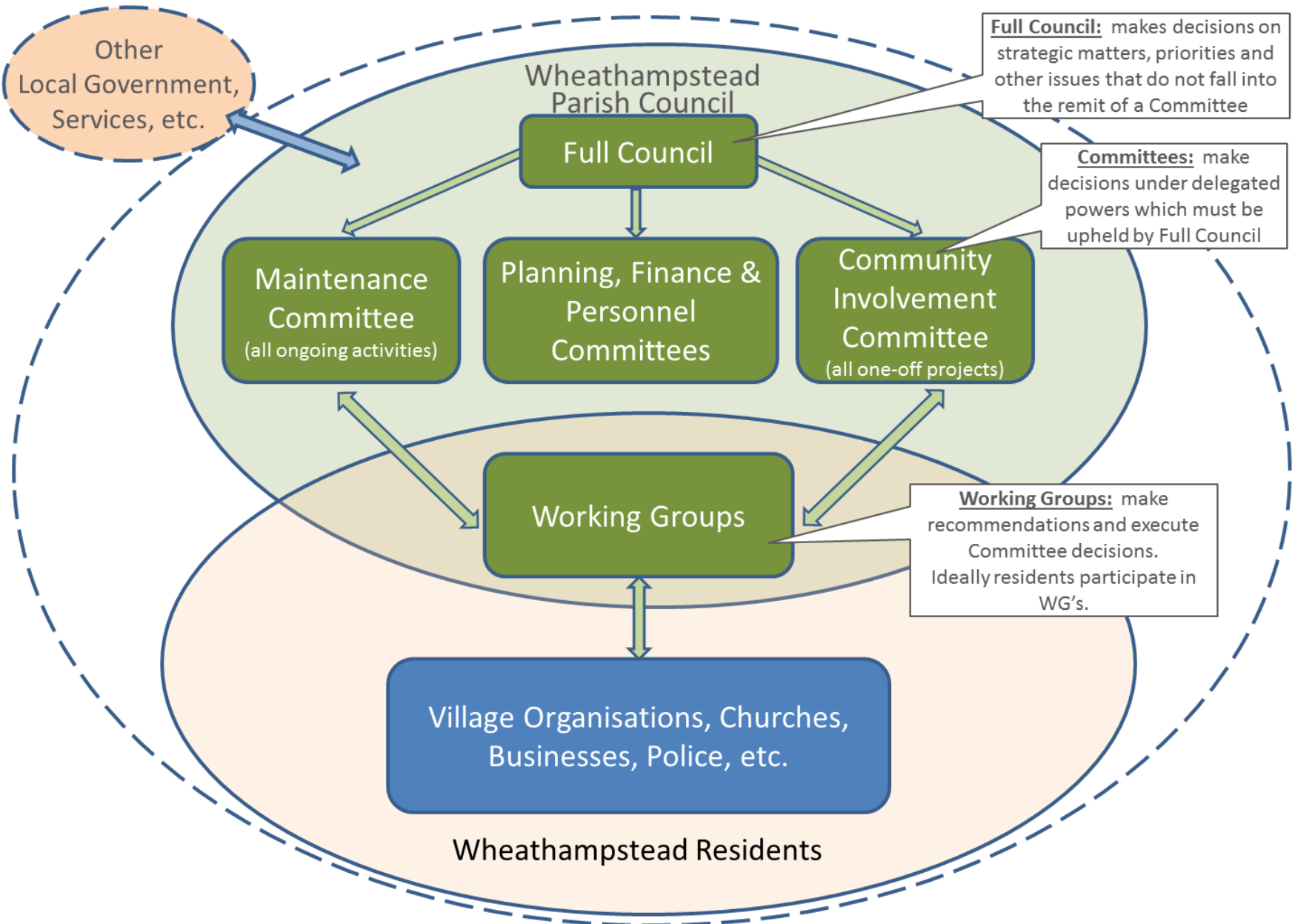
# Officers of The Council

Officer	Title
Julia Warren	Clerk to the Council
Ellie Metherell	Events and Community
Eleen Tan	Finance and Administration

## The Clerk and The Clerk's Office:

- Is the “Proper Officer” and, as such:
  - advises the Council on whether its decisions are lawful
  - is the legal signatory
- Is the Responsible Financial Officer
- Sets and has final say on Council meeting agendas
- Implements Council decisions
- Is independent, objective and professional
- is the manager of Council employees

# Structure

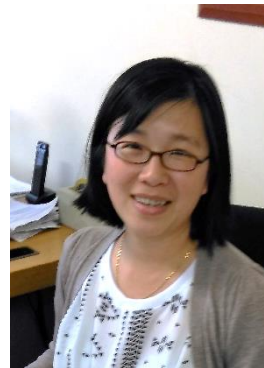




# Employees and Contractors



**Julia Warren**  
Clerk to the Council



**Eleen Tan**  
Finance, Meetings & Administration



**Ellie Metherell**  
Events & Community Liaison



**Richard Dolling**  
Caretaker

**Richard Dawes**  
Open Spaces & Maintenance Contractor



# Police



## Chloe Dagless

PCSO 4609

- Local knowledge
- Local intelligence
- Surgeries at the Memorial Hall
- WPC provides a police office

Parish Council has regular meetings with the neighbourhood policing team to set local priorities.





# Wheathampstead Community Safety Forum

- Meets quarterly
- Attendees from the major village groups to discuss safety issues
  - Churches Together
  - Community Group
  - Friends of Wheathampstead
  - Fire Service
  - Neighbourhood Watch
  - Parish Council (leads)
  - Police
  - WDPS
  - WEB





# Rangers & Open Spaces

- **Rangers** (in no particular order)
  - **Christine Field** - Butterfield Nature Reserve & Playing Fields (Natural England Wildlife Reserve)
  - **Mark Carter** – Devil’s Dyke & Butterfield Nature Reserve
  - **John Murray** - Marshall’s Heath (Natural England Wildlife Reserve)
  - **Eddie Cornell** – Station Platform, Station Yard & East Lane Car Park
  - **Bonnie Pinney** - Bower Heath (County Wildlife Site)
  - **Kate Aylett**- Gustard Wood (County Wildlife Site)
  - **Mary Cheale** - Melissa Field
  - **Patrick McNeill** - The Meads
  - **Peter Woodhams** - Rectory Meadow
  - **St Albans District Council** - Nomansland Common

**About 170 acres**

Mix of

- Nature reserves
- Common land
- Woods
- Ancient monument
- Historical sites
- Playing fields



# Budget Summary

Item	2016/17	2017/18
Allotments	£15,100	£10,510
Green Spaces Maintenance	£28,409	£28,933
Highways & PT	£23,700	£17,520
Insurance	£4,000	£4,050
Memorial Hall	£63,030	£68,280
Office Running Costs	£161,421	£180,284
PCSO	£7,125	£7,125
Playing Fields & Youth	£47,147	£27,010
Reserves for Asset Maintenance	£56,000	*£59,000
Professional Fees & Training	£15,360	£11,960
Pump	£7,812	£8,048
Rights of Way & Commons	£22,541	£26,415
Village Day	£8,000	£8,000
Neighbourhood Plan	£4,000	£5,000
Capital Items	£31,900	£25,700
<b>Total Running Cost</b>	<b>£495,455</b>	<b>£487,835</b>
Income	-£118,658	-£119,758
Accumulated Income	-£153,706	*-£130,706
<b>Precept</b>	<b>£223,091</b>	<b>£237,971</b>

Band D Increase 6.64%  
 =£5.05 per year  
 (9.7p/week)

\*Reserves: £189,706  
 Asset maintenance  
 Planned projects  
 Loss of income  
 Disaster recovery



# Parish Comparisons

	2015/16							
	Tax Base		Area Km <sup>2</sup>		Band D		Change	Staff FTE
Redbourn	93%	<b>2,718</b>	73%	19	119%	£96.61	9.81%	2.1
<b>Wheathampstead</b>	<b>100%</b>	<b>2,934</b>	<b>100%</b>	<b>26</b>	<b>100%</b>	<b>£81.12</b>	<b>6.64%</b>	<b>2.6</b>
Sandridge	161%	<b>4,738</b>	58%	15	64%	£52.26	4.81%	3.1
Harpenden	474%	<b>13,905</b>	46%	12	89%	£72.29	7.06%	16

	2016/17	Tax Base	Band D
St Michael	63.79%	284	£18.41
Redbourn	9.81%	2,718	£96.61
Harpenden Town	7.06%	13,905	£72.29
Wheathampstead	6.64%	2,934	£81.12
Harpenden Rural	6.21%	231	£19.49
St Stephen	4.84%	6,295	£68.46
Sandridge	4.81%	4,738	£52.26
London Colney	3.19%	3,388	£71.81
Colney Heath	-0.11%	2,378	£72.85

Band D = Precept/Tax Base  
 = £237,971/2,934  
 = £81.12

Increase of £5.05 p.a.



# WPC Grants

**£8,260 in 2016**

- Friends of Wheathampstead
- 1<sup>st</sup> Wheathampstead Scout Group
- The Thursday Club
- WDPS
- School Achievements Award
- Wheathampstead Community Group
- Citizens' Advice Bureau
- Wheathampstead Dementia Friends
- Wheathampstead Cricket Club

**Next round of grants to be decided on June 12th**



# Business Plan

- Available on the Web Site
- Regularly updated
- Contains:
  - How the council operates
  - What we do compared with District and County
  - Our commitments to you
  - Our plans for the near future



# On-Going Non-WPC Issues...

Working on your behalf to influence outcomes

- Anti-Social Behaviour
- Traffic – Including Lower Luton Road
- Speeding Traffic Through Village
- Butterfield Road Amenity Space
- Threats to the Green Belt & Planning
- Luton Airport Expansion
- Other issues from residents - lobbying





# Review of 2016/17



# Our Web Site

[info@wheathampstead-pc.gov.uk](mailto:info@wheathampstead-pc.gov.uk)



WPC - Home **Your Council** Facilities Open Spaces History Useful Links Contact Us



- Council Overview
- Your Councillors
- Council Minutes and Agendas
- The Pump - Our quarterly magazine
- Surveys and Consultations
- Reference and Policy Documents
- Neighbourhood Plan
- Annual Events



## News and Events

### Latest News

Annual Parish Meeting Wednesday 11th May 7.30pm at the Memorial Hall

Please join us at ... on Wednesday 11th May 2016 at 7.30pm in the Memorial Hall. Meet your Councillors and find out how your money has been spent in the last year and

Join our circulation list

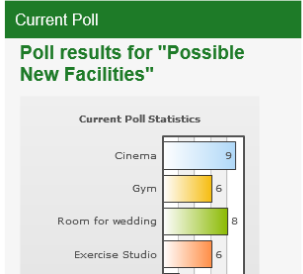
First Name

Last Name

Email Address

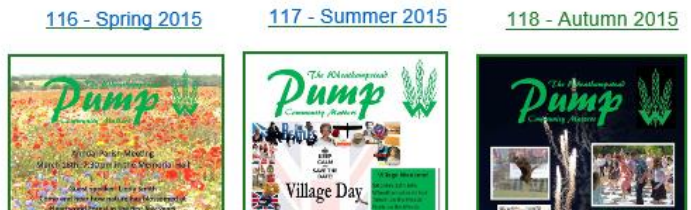
I want updates on:

- Village Events
- Open Spaces News (WOSV)
- Latest Pump (Magazine)
- Latest News
- Neighbourhood Plan



Calendar

Su	Mo	Tu	We	Th	Fr	Sa
27	28	29	30	31	1	2
3	4	5	6	7	8	9
10	11	12	13	14	15	16
17	18	19	20	21	22	23
24	25	26	27	28	29	30
31	1					





# Sponsored Activities for Younger Residents

- ArtsKool
  - 4 to 12 year olds: fun “arty” morning
- Top Hat
  - 5 to 17 year olds: dance, drama and singing
- Youth Project (Youth Club)
  - 13 to 19 year olds: structured games, cooking, football
- Free use of all-weather pitch (ATP)
- Most play equipment around the parish
- Nature Quest (Nomansland)





# Volunteer Groups

Important contribution to the Council's programme

- Wheathampstead Open Spaces Volunteers
  - Essential work to help maintain our 170 Acres of open spaces
  - Improving the ecology, biodiversity and access
- Our open spaces Rangers
- Litterblitz
  - Focused litter picking at key locations
  - Supporting village events
- Station Platform





# Litter Blitz





# Village Weekend

- Another huge success in 2016 and a great team effort from everyone!
- Success relies on volunteers
- 2016 theme “**All the World’s a Stage**”
  - Picnic on the Meads was more family-orientated: preceded by talent show on the Meads, firework finale sponsored by WEB
- 2017 theme “**When I Grow Up**”
  - Similar format to 2016

**Save the date: July 8<sup>th</sup>/9<sup>th</sup> 2017**



10/05/2013





**SATURDAY 8TH JULY**  
*Picnic on the M*

HOT DRINKS  
ICE CREAM

LIVE MUSIC 5PM~10PM

CHRISTINE & THE STACKYARD STOMPERS  
 Lydia Haynes  
 The number 7 band  
 Fantastic Fireworks  
 Sponsored by WEB

Save the Date

**Wheathampstead Village Weekend**  
 8th & 9th July  
 2017

When I grow up



# Lights Up

- No central “switch”
- New lights and “tree”



10/05/2017

wheatnampstead Annual Parish Meeting 2017



# Bury Green Garden

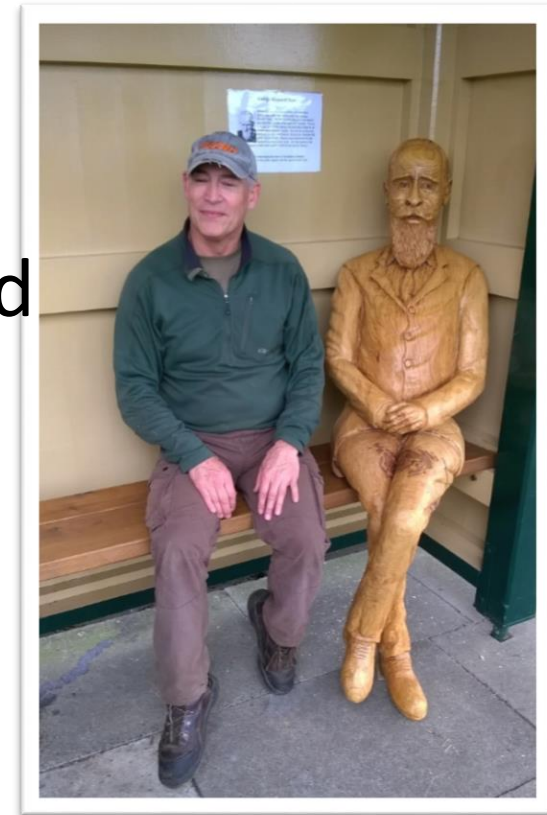
- Joint WDPS and Parish Council Project
- Support from Borrás Construction and others





# Station Platform

- Volunteers continue to maintain the site
  - Plants
  - Structures, painting, etc.
  - New interpretation board
- Visitors come all year round
- Some minor vandalism
- More enhancements?
  - Ideas welcome!





# Butterfield Playing Field

- Still no settlement with Persimmon (the developer) and County Council
  - Play area has been open some time
  - Dispute relates to services for the football pavilion
  - Parish Council refuses to accept site





# James Marshall Foundation



The James Marshall Foundation

Our foundation, your future

Financial awards to residents under 25 for educational, job and character building opportunities which will enhance their career potential, which they wouldn't otherwise be able to afford.

**In 2016 £72,869 was awarded to Wheathampstead young residents  
(Down from £78,214 in 2015)**

Applicants 16yrs and over	No.	Value
Degree	21	£32,497.50
Postgraduate degree	1	£224.00
Diploma	4	£4,113.00
Computer	2	£1,200
Sport	1	£600
School uniform	0	0
Music	1	£2,500.00
Work related	3	£4,884.00
<b>Total Grants</b>	<b>33</b>	<b>£46,018.50</b>

Applicants under 16yrs	No.	Value
Computer	12	£6,054.00
Equipment	4	£202.00
Fees	1	£1,488.00
Music	1	£250.00
School trip	33	£9,874.00
School uniform	37	£8,702.50
Sport	2	£280.00
<b>Total Grants</b>	<b>90</b>	<b>£26,850.50</b>

# Supported Services



- Citizen's Advice Bureau
  - Outreach service on Thursday
- Police Office
  - Dates and times subject to operational requirements





# Working with Others

*Beavers*

*WDPS*

*Drama Society*

*Amwell Fund Raisers*

*WEB*

*USA*

*Community Group*

*Alzheimer's Society*

*Recreation for the Retired*

*Guides*

*Thursday Club*

*Cubs*

*Scouts*

*Patient Participation Group*

*Horticultural Society*

*Wheathampstead Wanderers*





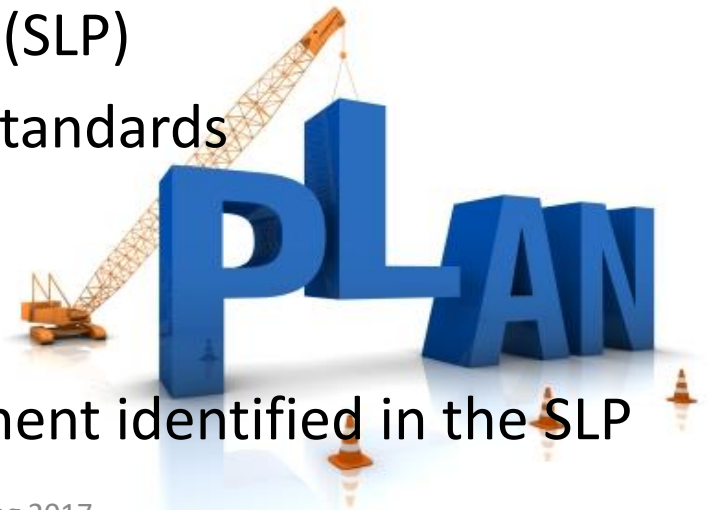
# Projects 2017-18

- Neighbourhood Plan
- Memorial Hall Renovation (4 Year Project)
- Butterfield Road Pavilion
- Library Move / New Facilities at the Memorial Hall
- Boules Court
- River Improvements
- Crinkle-Crankle Garden



# What is a Neighbourhood Plan?

- A way of helping local communities influence the planning of an area in which they live and work
- What it CAN do
  - Decide where and what type of development can take place
  - Promote more development than is set out in the St Albans strategic local plan (SLP)
  - Include policies, e.g. design standards
- What it CANNOT do
  - Conflict with the SLP
  - Be used to prevent development identified in the SLP





# Wheathampstead's Neighbourhood Plan?

- Steering Group Meets Regularly
  - Mix of Councillors and residents
  - Special interest groups
- Working on first draft
- Housing Requirements Survey
  - Every household sent a copy
  - Over 20% returned
  - Analysis in progress
- Plan held up partly because St Albans' Plan delayed





# Memorial Hall Renovation

- Phase I - Completed
  - Complete rewiring of main hall
  - New house lights
  - High quality projection for video/film
  - New audio system
  - New electronic screen
  - Acoustic baffles
  - Redecoration
- Phase II
  - Depends on library move
  - Discussions with architect





# The Library

- Manned by volunteers but not closed
  - Early meetings suggest plenty of volunteers
- Moving to the fire station
  - More space for Memorial Hall users
  - Helps to secure the fire station
  - Same size
  - More facilities





# Boules Court (Pétanque)

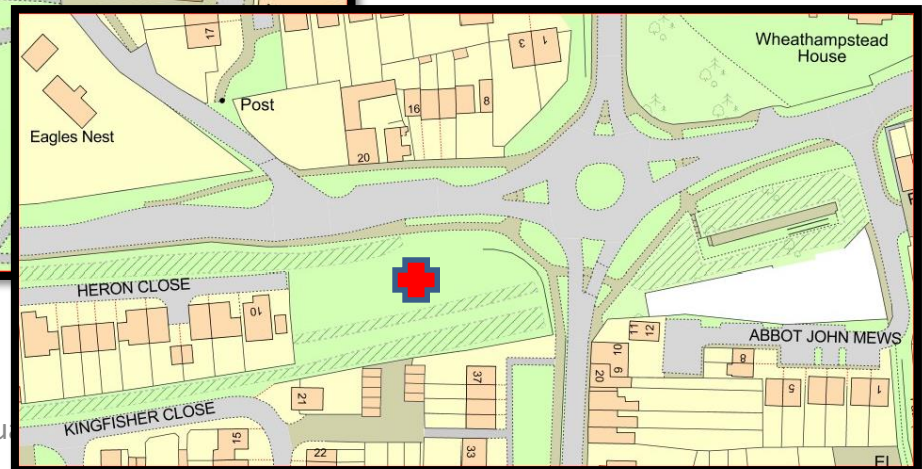
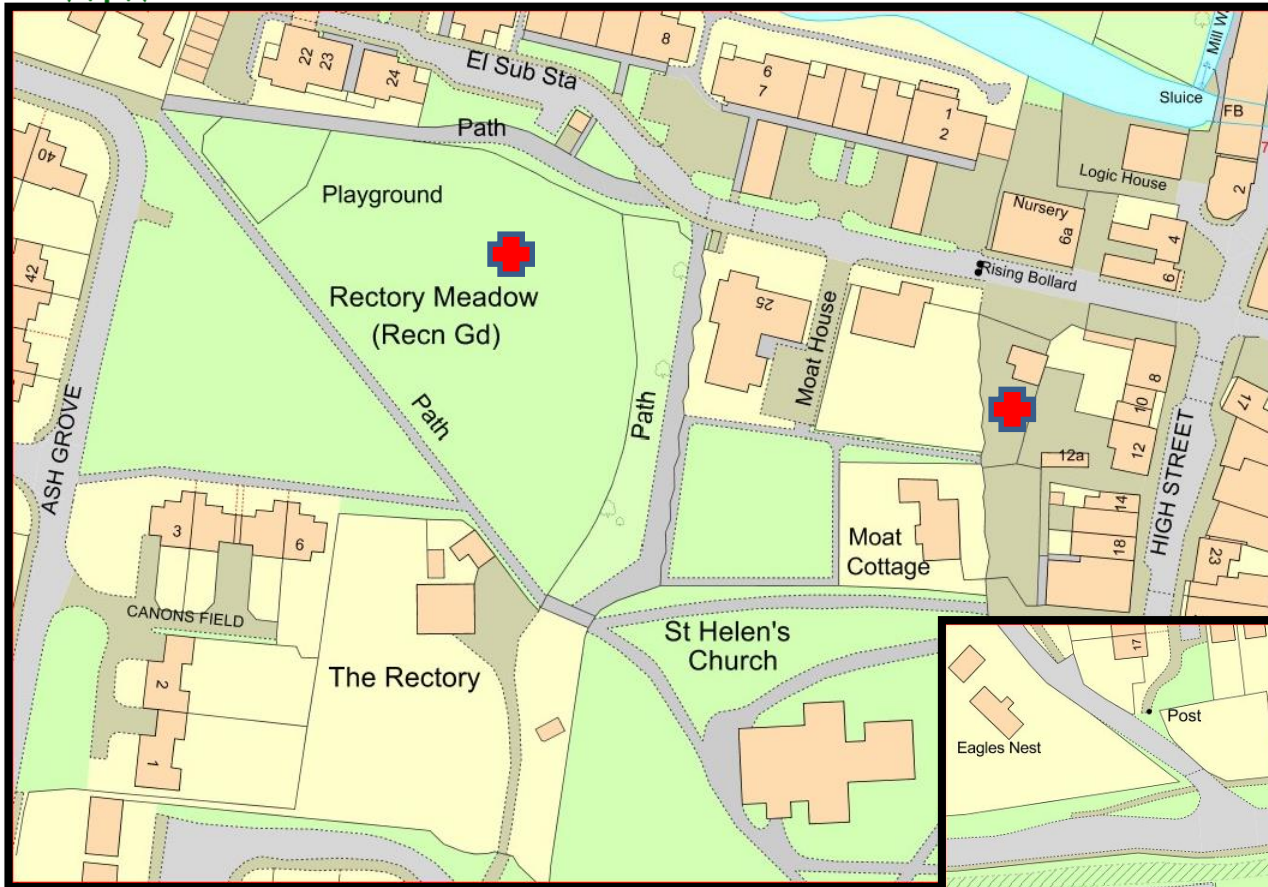


- Possible Locations:
  - Rectory Meadow
  - CC Garden
  - Tithe Barn Yard
  - Railway Sidings





# Possible Boules Court Location





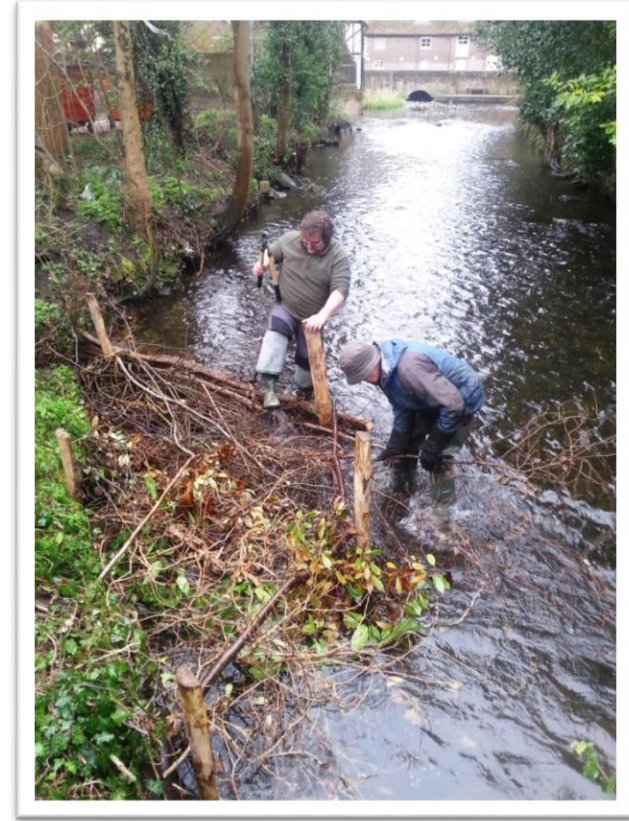
# Two River Projects

## 1. East Lane Car Park

- Improve light to river and access
- Improve bank biodiversity
- Reduce erosion
- Improve flow – riffing, deflectors
- New interpretation board

## 2. The Meads

- Balance public access with ecology of the river
- Project awaiting Environment Agency approval



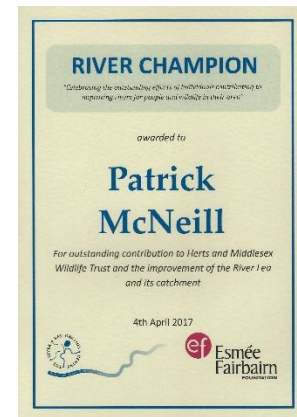




# Patrick McNeill

Meads Ranger

- River Champion
  - “**Outstanding contribution to Herts and Middlesex Wildlife Trust and the improvement of the River Lea and its catchment**”
- The River Restoration Centre
  - U.K. – Wide Organisation
  - Supported by:
    - The Environment Agency
    - Natural England





# Crinkle-Crankle Garden Update

- Delay due to discussions on whole site
  - Use/rebuild of the “old garage” (Tithe Barn)
  - Joint project with church?





# Questions





# Agenda

## Annual Parish Meeting

Wednesday, 10<sup>th</sup> May 2017

Memorial Hall

Time	Item
7:30pm	Chairman's Welcome & Address
	Approval of Minutes
	Council Structure & Financial Report
	Review of 2016/17
	Plans for 2017/18
8:30pm	Questions & Refreshments
9:00pm	Recycling in St Albans Louise Palmer, Recycling and Waste Officer
10:00pm	Close