

# Wheathampstead Pump Community Matters



Our River Lea in Spring  
Full of surprises!





## Africa, Madagascar India & Latin America

Creating unforgettable experiences

01582 766122

melissa@2by2holidays.co.uk

www.2by2holidays.co.uk

BESPOKE HOLIDAYS, PRIVATE TOURS & GROUP TOURS



EDWARDS ASSOCIATES  
ADVICE LLP

Call **Rob Howes** for independent  
financial advice in the village

THE OLD PRESBYTERY, MARFORD ROAD,  
WHEATHAMPSTEAD, HERTFORDSHIRE, AL4 8AY

TELEPHONE: 01582 833778

EMAIL: [rob@edwardsassociates.co.uk](mailto:rob@edwardsassociates.co.uk)

www.edwardsassociates.co.uk

Authorised and Regulated by the Financial Conduct Authority

I  MY  
*Award winning!*  
Pharmacist

## Repeat Prescriptions?



No need to visit the surgery  
every time...  
Just use our electronic  
prescription service

**manor pharmacy**

health • beauty • prescriptions • advice

MAKE MANOR PHARMACY YOUR PHARMACY

Telephone: 01582 832 102



DESIGN & BUILD

STAY WHERE  
YOU ARE



EXTEND REBUILD RENOVATE

T 01582 629 236

W [www.tudordb.co.uk](http://www.tudordb.co.uk)

WHITE HOT  
VANS.COM

Brand new vans

Supplied by main  
dealer

Full warranty

Up to 40% off RRP

Finance and leasing  
available

01582 484 885

[info@whitehotvans.com](mailto:info@whitehotvans.com)

[www.whitehotvans.com](http://www.whitehotvans.com)



JOHN  
CURTIS

*moving with the times*

01582 839200

[www.johncurtis.co.uk](http://www.johncurtis.co.uk)

VILLAGE AND COUNTRY HOMES

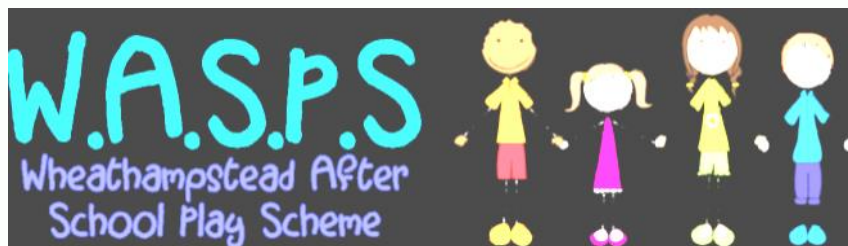


## Welcome to the winter edition of The Pump News in brief

The theme for next year's Village Weekend on Saturday 9 and Sunday 10 July is **"All the World's a Stage, 1616 to 2016"**, a celebration of all things theatrical on the 400th anniversary of Shakespeare's death. Get your thinking caps on for outfits and floats reflecting plays, dramas, actors, musicals, costumes and characters.



The Wheathampstead Community Group would like to give a big THANK YOU to the residents of Wheathampstead for their incredible generosity. Their yearly appeal raised £4,786.00 so far, which is amazing. With the information provided on the gift aid forms this amount will only go up!



WASPS have the following 2 vacancies at our Breakfast club for enthusiastic people who enjoy working with children: one for 7.30am to 9am Monday to Friday each week and the other for 7.30am to 9am Monday to Thursday each week during school term time only.

These are ideal positions for anyone who enjoys caring for children, including parents with older or grown up children, grandparents and retired people looking for something to fill their time, or younger candidates looking to pursue a career in childcare.

Both posts are covered by the Childcare Act 2006 and are subject to receipt of a satisfactory enhanced DBS disclosure and reference checks.

If you are interested in either of these positions, please contact Helen Archer at [admin@wasps-asc.org](mailto:admin@wasps-asc.org) or call 01582 834190 or 07522 552041 for an application form and full job description.

## Dates for your diary

**Thursday 11 February** Herts WI Spring Homecraft Day, Memorial Hall 9am to 4pm

**Saturday 13 February** Wheathampstead Open Spaces Volunteers Bower Heath 10am. See page.9 for more information.

**Thursday 18 February to Saturday 20 February** Wheathampstead Drama Society Play “The Weir”, Memorial Hall 7.30pm to 10pm.

**Thursday 25 February** U3A talk by Jay Carver Project Archaeologist for Crossrail “Excavating the Crossrail—what we found”, Memorial Hall 2pm.

**Saturday 20 February** Litterblitz volunteers, contact Eddie on 629494 or Derek on 760626 for more information.

**Thursday 10 March** Wheathampstead Patient Participation Group talk on breast disease, Memorial Hall 7.30pm. See page 5 for more information.

**Saturday 12 March** Wheathampstead Open Spaces Volunteers Gustard Wood 10am.

**Friday 18 March** Help for Heroes Quiz Night, Memorial Hall 7pm.

**Thursday 24 March** U3A AGM ,Memorial Hall 2pm.

**Friday 8 April** Herts WI Fashion Show, Memorial Hall 7pm.

**Saturday 9 April** Wheathampstead Open Spaces Volunteers Devil’s Dyke 10am

**Saturday 9 April** Litterblitz volunteers (æ above).

**Thursday 28 April** U3A talk by John Allen former police officer “Spare a copper for a piece of wood, a pea and a bracelet”, Memorial Hall 2pm.

### Join Wheathampstead Warriors Running Club, our new club.

All ability group runs take place on Monday and Tuesday evenings at 8pm. Meet in the car park behind the Memorial Hall. A ten week beginners’ running course is also starting on Tuesday 26 January at 9.30am at the Memorial Hall. Weekend runs and other events are planned for the future once the club gets established. Check out their facebook page “Wheathampstead Warriors” for more information.

On Thursday 10th March in the Memorial Hall at 7.30 pm Consultant Surgeon Mr Michael Pittam will give a talk to the **Wheathampstead Patient Participation Group** specifically about the major changes that have been developed in the management of breast disease over the last 25 years. Of wide interest to so many people, this talk will help dispel the myths that surround this subject. Mr Pittam has been a Clinical Director and Lead Surgeon of the Beds and Herts Breast Screening Programme and was the Quality Assurance Surgeon for the East of England Breast Screening Programme. Everyone welcome, no charge for attending, refreshments served. To reserve your seat, please contact Kaye Fisher on 01582 832240 or by email [fisher.kaye@yahoo.co.uk](mailto:fisher.kaye@yahoo.co.uk).



**Rotary in Harpenden** would like to thank the residents of Wheathampstead, Kimpton and Blackmore End for their generous donations to the Elves escorting Father Christmas around their streets just before Christmas. They raised £2,765.00 for Wheathampstead Thursday and

Community Groups, ADDvance (a charity supporting ADHD families) and other causes supported by Rotary.

Since 2001 Rotary has also been working with local primary and junior schools in Harpenden and Wheathampstead to send shoeboxes filled with items for the enjoyment of disadvantaged children and elderly people in Eastern Europe. Since 2001 12,600 boxes have been sent including 1128 boxes



school children and families filled in December. The picture shows children of Roundwood Primary School giving their boxes to Rotary helpers who sped them on their way to eastern Europe in time for Christmas 2015. See [www.rotaryshoebox.org](http://www.rotaryshoebox.org) for more information.

## BBC Countryfile's Ellie Harrison visits Wheathampstead's rare heathland golf course

The BBC's Ellie Harrison got more than she bargained for when she paid a visit to Mid-Herts Golf Course, Wheathampstead, to explore one of Hertfordshire's few remaining lowland heathlands and acid grasslands.



The golf course is species-rich with tracts of heather, grasses and wildflowers as well as a home to a range of woodland fauna that includes nuthatch and great spotted woodpeckers. Trying her hand at golf, Ellie soon found the course to be rather special as she tried to hit her ball from

one of the environmentally-important hazards to be found on the 4th hole – rare fescue grass.

In a report broadcast for the BBC Countryfile programme in January, Ellie reported on how the golf club (which has occupied the land for nearly 125 years) is working closely with the Herts and Middlesex Wildlife Trust on a management plan to continue to develop the golf course to “a flourishing mosaic of heathland, acid grassland and secondary woodland”.

Ellie Harrison said: “This is a fascinating and important environmental project which brings together a partnership between the local wildlife trust and a golf club. Lowland heathland or ecologically similar acid grassland habitats were once widespread across much of southern or mid-Hertfordshire. The loss of heathland in Hertfordshire has been dramatic since 1940, with an estimated 97% loss in area, so that today no more than about 20 ha (nearly 50 acres) of open dry and wet heath survives.”

For more information on the Parish Council's open spaces management plan including the Herts and Middlesex Wildlife Trust 2012 wildlife survey on the eastern side of Gustard Wood Common visit [www.wheathampstead-pc.gov.uk](http://www.wheathampstead-pc.gov.uk). For membership details for the Mid Herts Club including special offers please contact Club Manager Colin Howard on 01582 832242

## Could You Be A Firefighter On Call?

How would you like to put something back into the community where you live or work? Carry on with your normal activities, job, home life, and carry a pager to respond to emergency calls. Whether it's someone who has locked themselves in, a major fire, or a road traffic collision, you will be helping someone in our community. The crew at Wheathampstead also attend local schools, visit people in their homes and check smoke alarms.

If you live or work within 4 minutes of Wheathampstead fire station and are over 18 years old, please log onto [www.hertsdirect.org/fire](http://www.hertsdirect.org/fire) or pop into the fire station on

Marford Road between 19:00 and 22:00 on a Tuesday evening and speak to one of the crew. Or call Station Commander Phil Smith on 07796 997366 or e-mail him at [phil.smith@hertfordshire.gov.uk](mailto:phil.smith@hertfordshire.gov.uk) .

HERTFORDSHIRE FIRE AND RESCUE SERVICE

Could YOU be a  
**FIREFIGHTER?**  
'ON-CALL' ?

Recruitment information evening  
**9th February 2016 - 6.30pm**  
at Wheathampstead Fire Station, Marford Road ALA 0AY

You will need to live or work within 4 mins of  
Wheathampstead Fire Station

For more info and to apply please visit  
[www.hertsdirect.org/rds](http://www.hertsdirect.org/rds)

Care worker  
Florist  
Teacher  
Optician  
Sign fitter  
Housewife

AMBULANCE

Working to protect. Acting to save.  
[www.hertsdirect.org/fire](http://www.hertsdirect.org/fire)

## News from the Wheathampstead Business Group (WEB)

WEB reached the finals of the Hertfordshire Business Awards. With no previous experience but a most compelling message, WEB made it into the finals in the Social Enterprise category. Long-standing WEB member Norman Whitwood compiled "WEB – The Story so far" which, in its extent and diversity, surprised even him.

December 5th saw our first Small Business Saturday event in Wheathampstead. Support from 40 participating businesses was truly amazing. Over £2,400-worth of prizes were donated for the Prize Draw.

For more information on WEB visit [www.wheathampstead.org.uk](http://www.wheathampstead.org.uk).

## Wheathampstead Open Spaces Volunteers (WOSV)



WOSV group has been busy at Bower Heath, Gustard Wood and Butterfield Road Local Nature Reserve (LNR). I have previously remarked on Gustard Wood and Butterfield Road LNR so I thought I would devote a few lines to Bower Heath. The first photograph shows

an area on our LNR that was previously overgrown and cleared by the volunteers to protect the acid grassland.

Bower Heath consists of 8 ha (19 acres in old money) of mixed secondary woodland, open glades and areas of acid grassland. It is situated in the north eastern corner of the parish and is accessed by turning from the Lower Luton Road west of Batford up Bower Heath Lane. There is a small parking area and the Heath is bounded by a bridle way and crossed by 5 footpaths. Acid grassland is a rare and disappearing habitat in Hertfordshire and as a result the Heath has been designated as a wildlife site of county importance. Bower Heath is common land, owned by Wheathampstead Parish Council. Older maps show significantly more areas of open grassland at a time when it was used for communal grazing. Nowadays it is open access land and used predominately for recreation purposes.

The Parish Council has a management plan for the Heath which is available from the Parish Office. Part of that management plan is to "Conserve the biodiversity and heritage value of the Heath, in particular the acid grassland, sustainably and over the long term". WOSV have spent time clearing back invading scrub and small trees to prevent the remaining acid grassland being taken over by woodland.



*...Continued on page 9*



... *Continued from page 8* It is unlikely that our efforts will create more acid grassland however our aim is to create an area of mown grassland around the existing acid grassland to protect it. The grassland is subject to an annual cut which is raked away to help sustain this unimproved heath.

Visits at any time of year are rewarding with many species of birds, butterflies and plants present. In particular the acid grassland contains Heath Bedstraw, Sheep's Sorrel, Harebell and Fescue grasses to name a few.

If you are interested in helping to maintain our open spaces and have a few hours to spare on the morning of the second Saturday of the month please contact the parish office for further information.

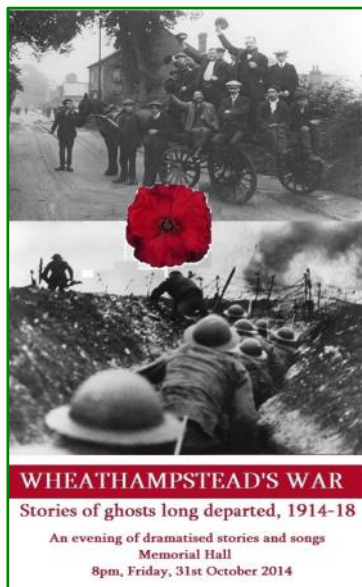
**Peter Ryan**, WOSV. Coordinator.

## Wheathampstead's War DVD

Following last year's successful community event "Wheathampstead's War", with dramatised stories and songs, telling of the village peoples' role in the First World War, a DVD of the evening is available to purchase. The event was played to a full house with many people being turned away at the door.

The DVD is a chance to experience this one-off event or simply a reminder of our community at its best. A comment from the audience included "*that's the best thing Wheathampstead has ever done*".

The show was filmed by two people, Barry Euington and Brian Joyce. Their two films have been professionally edited together to produce a film of the show.



A DVD copy can be obtained at cost price of £4.50 from Terry Pankhurst by calling 832817 or email [terence.pankhurst@btopenworld.com](mailto:terence.pankhurst@btopenworld.com)



At **Citizens Advice Outreach at Wheathampstead** we have had a few enquiries about Powers of Attorney arrangements.

Sometimes it can be difficult and costly to access information and assistance on this area of the law, and the statutory forms can be daunting. We recently advised a client to enable them to make decisions on health, welfare and finance for somebody else. It

became apparent that the client was on a low income and caring for somebody else. As a result, we investigated how to maximise the client's income and find them additional support. We helped the client to apply for Housing Benefit and Council Tax reduction. The client was also entitled to Carer's Allowance which increased the amount of any means tested benefits eventually awarded.

We also advised a client that due to having a low income they may be entitled to free or reduced health costs such as dental charges. They were also provided with a voucher to use at the foodbank because they were experiencing temporary financial hardship. It should be possible to register clients on the Priority Services Register with their energy supplier. This is a scheme which offers extra services free of charge if you are of pensionable age, are disabled, chronically sick or have sight/hearing difficulties.

We can also check whether clients are eligible for a discount on their electricity bill via the Warm Home Discount Scheme.

It is also often possible for Citizens Advice to access grants and other practical/financial support through local charities.



The advice we have given to clients has maximised their income and made it much easier to make ends meet. We expect one client will be better off by at least £50 per week.

To visit CAB please come to the Memorial Hall on Thursdays between 10am and 12pm or call 01727 811118 to arrange an appointment.

## NONPAREIL IS MOVING

Our lease expires at the end of August so, from then and for the time being, our business will be operating from **our office at home**. Our showroom will disappear temporarily, until we find new premises, but our business will continue as usual.

**Our contact details remain the same:**

**Office: 01582 832121**

**Emergencies: 07971 950712**

[www.nonpareilsolutions.co.uk](http://www.nonpareilsolutions.co.uk)

We look forward to being of continued service to you.

Kind regards  
*Juan and Stephanie*

## Need help with your Social Media?

Need to update your LinkedIn profile?

Want to know how to get your Facebook posts noticed?

One-One training & courses offered.

General Marketing help tool

Call Wendy Griffith: 07891120553

[wendy@proteamarketing.com](mailto:wendy@proteamarketing.com)

[www.proteamarketing.com](http://www.proteamarketing.com)



## SOPRANO SOLOIST

Linda Wener

To sing at: Weddings  
Funerals  
Concerts

Extensive repertoire, Professionally trained

Telephone: 01582 833 500

[www.solosoprano.co.uk](http://www.solosoprano.co.uk)

Email: [linda@solosoprano.co.uk](mailto:linda@solosoprano.co.uk)

## Voytek Computer Service

Friendly, expert consultancy. We will sort out all your PC/Mac computer problems, remove viruses and upgrade your computer. Home and small businesses. Custom built computers tailored just the way you want them!

Ask for our special anniversary offer  
**20% off\*\***



Tel/Fax **01582 622933**  
[service@voytekcomputers.co.uk](mailto:service@voytekcomputers.co.uk)  
[www.voytekcomputers.co.uk](http://www.voytekcomputers.co.uk)



\* valid only in April 2015



## Fenlon & Co

YOUR LOCAL ACCOUNTANT

- Self Assessment tax returns
- Accounts for self employed
- Payroll management
- Accounts for Ltd Companies
- VAT returns

6 High St. Wheathampstead, AL4 8AA

Tel: 01582 831234 day;  
01727 759334 eve.

## JESSAMINE MOTOR COMPANY LTD



Servicing & Repairs  
MOT Testing

Tyres, Batteries & Exhausts

Air Conditioning System Repairs & Re-Gassing

Diagnostic Fault Code Reading Equipment

Quality Used Car Sales



15 High Street, Wheathampstead, AL4 8BQ

01582 832212

[www.jessaminegarage.co.uk](http://www.jessaminegarage.co.uk)



Fully Insured  
Part 'P' Registered

## ELECTRICIAN

Domestic - Commercial - Industrial

- Fuse Boards ⊕
- Power Supplies to outbuildings ⊕
- Telephone / Network points ⊕
- 3 phase supplies ⊕
- Lighting scheme upgrades ⊕

Local - Friendly - Reliable Service

Call Mark Barnes-Rider on 07775 591 698  
or email: [MarkB\\_rider@icloud.com](mailto:MarkB_rider@icloud.com)



## Wheathampstead Osteopathic Clinic

- Back, Neck & Shoulder Pain
- Hip, Knee & Ankle Pain
- Sciatica/Neuralgia
- Postural Assessments

Registered Osteopath B.Sc (Hons) M.Ost

The Village Surgery, Marford Road  
Wheathampstead, AL4 8BT

**07758 892185**

[www.wheathampstead-osteoclinic.co.uk](http://www.wheathampstead-osteoclinic.co.uk)

## COMPLETE GUTTERING SERVICES

GUTTER CLEARING,  
REPAIRS & REPLACEMENT  
NEW UPVC FASCIA  
INSTALLED, REPAIRED OR  
WASHED DOWN

RELIABLE & EFFICIENT SERVICE  
**01582 831651 / 07941 437504**  
[www.completeguttering.co.uk](http://www.completeguttering.co.uk)

ALL WORK GUARANTEED

**Mr Green**  
Landscaping and Lawncare

Professional, local and friendly.  
For a free quotation call:  
**07539 441 055**

[www.mrgreenlawncare.co.uk](http://www.mrgreenlawncare.co.uk)

## Wheathampstead & District Preservation Society



working to protect  
all that's best  
about our village

**Please join us**—the more members we  
have, the louder our voice. It only costs £5

**For more info or to join us, visit**

[www.wheathampsteadpreservation.org.uk](http://www.wheathampsteadpreservation.org.uk)

## THE BEAUIQUE

BEAUTY ROOMS AND HAIRDRESSING

The Beautique offers you a warm,  
friendly, professional Salon experience.

You can expect the highest quality  
Beauty treatments from owner, Karen.

Why not try our new Mesotherapy  
treatments, including Meso:BTox.

9 Station Road, Wheathampstead, AL4 8BU

**01582 831 903**

## Confident with your camera?

Are you baffled by buttons, discouraged by dials, flummoxed by F-Stops? Then come along to one of Ian's photography workshops and learn how to get the best out of your camera.

Affordable - local - accessible to all

Unleash the photographer in you!

Call Ian or Emma for more info and dates:  
01582 469003

IAN SCOTT PHOTOGRAPHY

Do you need help with  
**WRITING** something?  
Or maybe, with a **DESIGN**?

If you need help with an ad, or a brochure, a book, or a speech – anything requiring erudite and compelling expression, call me.

I can also provide photography, illustration and digital artwork.

Jeremy Birkett

07939 510408 [jeremy@r-birkett.co.uk](mailto:jeremy@r-birkett.co.uk)



T&B (CONTRACTORS) LTD

## Regional Contractor

Supporting Local Community Projects

Telephone: 01582 833 633  
[info@tandbcontractors.com](mailto:info@tandbcontractors.com)  
[www.tandbcontractors.com](http://www.tandbcontractors.com)

# RJSpiers Carpentry

*Making Wood Work*

Tel: 07979 225 096

- Kitchens
  - Doors
  - Flooring
  - Stair Parts
  - Decking
- City & Guilds  
Qualified

## The Old Bakery Carpets

3 Station Road,  
Wheathampstead, AL4 8BU  
Tel: 01582 831999  
[www.hertscarpets.co.uk](http://www.hertscarpets.co.uk)

**Carpets, vinyl and wood  
floor coverings,**  
all fitted at  
competitive prices



## BENEDICTS

FINE FURNITURE

EVERYBODY IS DIFFERENT, THEREFORE EACH DESIGN SHOULD  
BE DIFFERENT...UNIQUE FURNITURE FOR UNIQUE PEOPLE



[WWW.BENEDICTSFINEFURNITURE.CO.UK](http://WWW.BENEDICTSFINEFURNITURE.CO.UK)

E: [ben@benedictsfinefurniture.co.uk](mailto:ben@benedictsfinefurniture.co.uk)

M: 07734 955993

**Need friendly, professional  
Help with your PC or Mac?**



**Wheathampstead  
Computer Services**

**Call Mark today on**

**01582 831 533**

[www.wcs-it.co.uk](http://www.wcs-it.co.uk)

## *Life & Careers Coaching*

Is there anything in your life you would like to improve? Would you like to have more fun?  
Improve your career? Earn more money?  
Would you just like to be happier?

Norman Whitwood Life Coach  
Wheathampstead 01582 833 360

[www.lifeandcareerscoaching.com](http://www.lifeandcareerscoaching.com)

*through the lens* PHOTOGRAPHY

*Wojciech Zalewski & Fiona Adams*

-  Portraits
-  Weddings
-  Commercial
-  Landscape & Nature
-  Scanning, restoration and printing of old photographs



**Tel 07535 457668**

[www.throughthelensphoto.co.uk](http://www.throughthelensphoto.co.uk)  
[info@throughthelensphoto.co.uk](mailto:info@throughthelensphoto.co.uk)



## **Will Writing**

**Will Writing  
Lasting Powers of Attorney  
Trusts**



*Affiliate member of the Society of Will Writers*

**Call MIKE O'BRIEN  
01582 833778  
or 07866762985**



*Wheathampstead Women's Choir*

**Birds of a Feather**

*(formerly Wheathampstead Community Choir)*

*Invites you to come and sing!*

Meets on Mondays 1.15- 2.45pm  
Mead Hall, East Lane, Wheathampstead

No experience required, and you don't need to read music!

To find out more contact Anna Bosatta  
07796 342620 [anna@bosatta.com](mailto:anna@bosatta.com)

## **PAUL HUMBLES TREE SERVICES**

- Tree Felling
- Tree Surgery
- Hedge Cutting
- Stump Grinding
- Fully Insured

**Call for your free quotation:**

**01582 763549 or  
07957 680121**

## 5 year olds eat and drink their body weight in sugar every year

Currently 19% of four to five-year-olds and 28% of 10 to 11-year-olds are overweight or obese in Hertfordshire so Hertfordshire County Council is encouraging parents to get “Sugar Smart” and take control of their children’s sugar intake. The Change4Life campaign warns parents about the health harms of eating and drinking too much sugar, including tooth decay and becoming overweight.

It also reveals the sugar content of everyday food and drink; a 43g chocolate bar contains six cubes of sugar, a 200ml juice drink contains over five cubes and there are nine sugar cubes in a can of cola, instantly taking children up to or over their recommended maximum for the day.

Five million Sugar Smart packs will be given away to primary school children and their families via schools, local authorities and retailers. There will be 25 Change4Life Sugar Smart roadshows taking place across the country from January to March.

Download the Change4Life Sugar Smart app to find out how much sugar is in the food and drink your family consumes every day and search ‘Change4Life’ for lots of free support, tips, ideas and recipes.

If a parent is worried about their child’s weight they can speak to their GP, school nurse or contact Beezee Bodies who offer programmes to help the whole family make changes



<http://beezeebodies.com/>



We support

**Dementia  
Friends**

An Alzheimer's Society Initiative



**THE  
Wheathampstead  
FRIENDS**

## Wheathampstead Dementia Wellbeing Group

invite you to

a coffee/tea morning and friendly get together

in the MEAD HALL, EAST LANE

(Behind the Bull)

on the 1st and 3rd Wednesdays of each month

between

10.30 and 12.00 noon

**Come and join us for a warm welcome**

(The back of the public car park is close to the entrance. For wheelchairs and those with restricted mobility there is a small area in front of the hall for off-loading, near to the ramp and door.)

More information from Paul Millac 01582 834490

or Margaret Carter 01582 832368



## Youth News

**Wheathampstead Wanderers Football Club (WWFC)** initiatives for 2015/16 include an adult team and training for girls in school years 1 to 3. WWFC provides football for local children and young people at affordable prices. For more information contact Andy Ellis on 07530 612366 or email [andrewwwfc@gmail.com](mailto:andrewwwfc@gmail.com).



**Top Hat's** end of term show (see picture) was a collection of songs from musicals and films. Warren Bacci said: "The end of term show was fantastic, the kids did so well and the show was enjoyed by all. The students then performed at the "Lights Up" event and I was so proud of them"



Top Hat Stage School (subsidised for Wheathampstead children by Wheathampstead Parish Council) meets every Wednesday at the Memorial Hall from 4.30pm to

6.30pm. Five to seventeen year olds take part in a variety of dance, drama and singing. For more information please call 01727 812666 or email [info@tophatstageschool.co.uk](mailto:info@tophatstageschool.co.uk).

**Wheathampstead Youth Project** meets at the Memorial Hall every Tuesday evening from 7pm to 9.30pm for 13 to 19 year olds, free of charge. Activities include structured games, football on the all-weather pitch, and cooking, all supervised by the Youth Connexions team. For more information please contact Robert at [Robert.Brown@hertfordshire.gov.uk](mailto:Robert.Brown@hertfordshire.gov.uk)

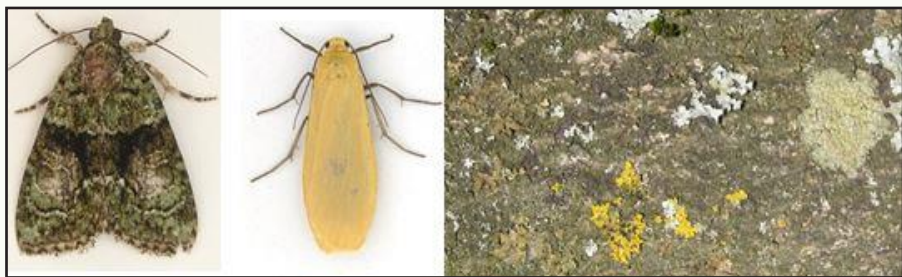
**ArtsKool** offers children aged 4 to 12 discounted 'Fun Arty Mornings' for only £5! This includes art materials and refreshments. Classes take place on the first Saturday of every month between 9.30am and 11am at the Memorial Hall. Visit [www.artskool-kids.com](http://www.artskool-kids.com) for more information and register for monthly reminders and discounted offers by texting 'WH interest list' to 07890 575828.



## Clean Air and Lichens at Marshalls Heath.

Lichens are crusty or bushy patches of fungus combined with an alga that are found on trees and rocks. They are important food sources for some moth caterpillars and other insects and are one of nature's air quality indicators.

Many species in our area became extinct in the 1800s when sulphur dioxide (SO<sub>2</sub>) levels increased with Britain's industrialisation, and in the 1950-60s Marshalls Heath would have hosted only a handful of species tolerant of SO<sub>2</sub>. However, the Clean Air Acts dramatically reduced SO<sub>2</sub> in the U.K., and lichens, which were extinct or rare 30-40 years ago, have gradually returned. With them have returned the moths that depend on lichen, including the Tree-lichen Beauty which had been extinct in Britain since 1860. Its return began in the 1990s, first as an immigrant on the south coast, where it bred upon the lichens that it found there, and then spreading inland, reaching Marshalls Heath for the first time on 22nd July 2014.



Tree-lichen Beauty, Orange Footman moths, lichens on an Oak tree; all photographed at Marshalls Heath

Footman moths have also greatly benefitted, particularly the Scarce Footman and the Orange Footman, both of which feed on lichen and now occur in numbers every year on the Heath.

In view of this, Andrew Harris, the lichen recorder for Hertfordshire, together with experts Mark Powell, Paula Shipway and Catherine Tregaskes, spent a day in 2015 going over Marshalls Heath with a fine-tooth comb. They were surprised to find 73 different species, including 7 classified as Nationally Scarce. One species, *Phylloblastia fortuita*, is Nationally Rare and was the first recorded in Hertfordshire. This is the first time that a thorough survey of lichens has been carried out at Marshalls Heath. .

*..Continued on page 19.*

*...Continued from page 18* With the other new moths and insects seen here for the first time in 2015, the total number of wildlife species seen on Marshalls Heath now tallies more than 2,500.

A special thank you to those 20 of you that turned up to help on the two work days at Marshalls Heath in 2015. If you who would like to lend a hand this summer please contact me at [j.b.murray@open.ac.uk](mailto:j.b.murray@open.ac.uk) or WOSV at [info@wheathampstead-pc.gov.uk](mailto:info@wheathampstead-pc.gov.uk).

John Murray



The Police & Crime Commissioner and District elections take place on Thursday 5 May 2016. Residents are reminded to make sure that they are registered to vote.

Only those people who are registered can take part in May's elections so if you have recently moved to the area or moved house it is important that you register again at your new address. Registering to vote is straightforward and can be done online at [www.gov.uk/register-to-vote](http://www.gov.uk/register-to-vote). The deadline date for receiving applications to register for the May elections is Monday 18 April 2016.

If you cannot visit a polling station on the day of the elections, you can still have your say by applying to vote by post or proxy. The deadline for receipt of new postal vote applications is 5.00 pm on Tuesday 19 April 2016 and for new proxy vote applications 5.00 pm on Tuesday 26 April.

Voter registration forms and postal vote application forms are available from [www.aboutmyvote.co.uk](http://www.aboutmyvote.co.uk) or by calling the elections team on 01727 819294.

For further information on registration and voting please visit [www.stalbans.gov.uk/elections](http://www.stalbans.gov.uk/elections).

## A message from your Parish Councillors.

To those residents who take the time and trouble to pick up other people's litter –

**THANK YOU!** We know who some of you are and you set an example to us all. You make a big contribution to keeping our village and open spaces looking good and Wheathampstead a great place to live and work.



Our Litter Blitz team and the open spaces rangers deserve thanks for their efforts too. See Dates for your diary page 4 for more information.

Did you know that “Keep Britain Tidy” campaign started back in 1954 by the WI and is still going strong? See [www.keepbritaintidy.org](http://www.keepbritaintidy.org) and learn about their “Clean for the Queen” campaign.

The Parish Council and Sandra Wood, one of your District Councillors, are working to increase patrols by parking enforcement officers in and around the village. Apart from blocking the High Street by parking badly in the Tesco bay, people are also obstructing the Fire Station (see photograph below). How would you feel if a fire engine or ambulance couldn't attend your home because a car had blocked their exit, risking peoples lives?

Parking next to the bakers is also a problem – despite the double yellow lines. Emergency services have been prevented from getting to properties in King Edward Place and Old School Drive.



**Be warned—you will get a ticket if you park by a dropped curb, too close to corners, on zig-zag lines or in a disabled bay if you don't have a Blue Badge.**

## Police Surgery dates at the Memorial Hall



HERTFORDSHIRE  
CONSTABULARY

Saturday 6 February	3pm to 5pm
Thursday 11 February	10am to 12noon
Monday 15 February	2pm to 4pm
Tuesday 23 February	3pm to 5pm
Saturday 27 February	10am to 12noon
Friday 4 March	10am to 12noon
Wednesday 9 March	2pm to 4pm
Saturday 12 March	3pm to 5pm
Thursday 17 March	10am to 12noon
Monday 21 March	2pm to 4pm
Tuesday 29 March	3pm to 5pm
Saturday 2 April	10am to 12noon
Friday 8 April	10am to 12noon
Wednesday 13 April	2pm to 4pm
Saturday 16 April	3pm to 5pm
Thursday 21 April	10am to 12noon
Monday 25 April	2pm to 4pm
Tuesday 3 May	3pm to 5pm
Saturday 7 May	10am to 12noon
Friday 13 May	10am to 12noon

PCSO 6021



Che Ponton

**All the dates and times are subject to operational requirements.**

### Clerk to the Parish Council

Julia Warren, Parish Council Office, The Memorial Hall, Marford Road, AL4 8AY.  
Contact on 01582 832541 or [info@wheathampstead-pc.gov.uk](mailto:info@wheathampstead-pc.gov.uk)  
website: [www.wheathampstead-pc.gov.uk](http://www.wheathampstead-pc.gov.uk)

### Your Parish councillors

Annie Brewster	Fairways, Firs Drive, Gustard Wood, AL4 8LB	01438 832255
Gill Clark	16 Tudor Road, AL4 8NW	01582 832579
Adrian Dante	25 Wright Close, AL4 8TJ	07780 836624
David Davies	3 Cherry Tree Lane, AL4 8HP	01582 821350
Elias Habib	69 Necton Road, AL4 8LB	07925 915998
Linda Halford	35 Marshalls Way, AL4 8HZ	01582 760593
Steve Haynes	65 Necton Road, AL4 8AT	01582 629327
David Johnston	9 Brewhouse Hill, AL4 8AN	07774 211933
Tessa Reason	Croft Farm, Cherry Tree Lane, AL4 8HP	01582 832071
Judy Shardlow	28 Dale Ave., Gustard Wood, AL4 8LS	01438 833858
Paul Wilby	35 Nurseries Road, AL4 8TP	01582 834549
Peter Woodhams	54 Butterfield Road, AL4 8QH	01582 832541

### Your District councillors

Annie Brewster	As above	As above
Gill Clark	As above	As above
Sandra Wood	12 Mount Road, AL4 8BX	07919 497818

### Your County councillor

Maxine Crawley	14 Saberton Close, Redbourn, AL3 7DS	01582 793760
----------------	--------------------------------------	--------------

### Your MP

Rt Hon Peter Lilley	104 High Street, London Colney, AL2 1QL	01727 827201
---------------------	---	--------------

### Police

Your local officers are PC1848 Arthur Wilkes and PCSO 6021 Che Ponton.  
Please see page 21 for Police Surgery dates at the Memorial Hall.  
Call 101 for non-emergency and information, or 999 for an emergency.

### Council Services contacts

To report highways matters eg salt bins, potholes, lights, road signs, abandoned roadwork signs, call 0300 1234 047 or report online at [www.hertsdirect.org/highwayfaults](http://www.hertsdirect.org/highwayfaults).  
For recycling collections, fly-tipping and other local services contact St Albans District Council on 01727 866100 or visit [www.stalbans.gov.uk](http://www.stalbans.gov.uk) and select Local Information Service.

# Cassidy & Tate

Your Local Experts

If you are looking to sell or let your property please call Nick Masters on 01582 831200 for realistic advice.

**allegro blinds** *Formerly Apollo Blinds*



Trading locally for 25yrs  
For all your blind needs

Rollers,  
Wood Blinds  
Verticals, Venetians,  
Pleated, Romans, Velux,  
Plantation Shutters,  
Patio Awnings/Canopies  
Conservatory  
Blinds

[www.allegroblinds.co.uk](http://www.allegroblinds.co.uk)

Call for a FREE QUOTE 01582 831052

Suzuki styled piano lessons  
with Music Theory  
from the age of 4 years old

**Claire S Parlington**

BA(Hons)Music

MEMBER INCORPORATED SOCIETY OF MUSICIANS

**C# Music Tuition**

*Building Sound Foundations*

[claire@csharpmusic.co.uk](mailto:claire@csharpmusic.co.uk)  
[www.csharpmusic.co.uk](http://www.csharpmusic.co.uk)  
01582 832800



## COPPERTOP AND HEAVENS ABOVE



### Hairdressing and Beauty

Celebrating THREE decades of quality service to the village!

ALTERNA... REDKEN... GHD... CACI

Directly opposite Tesco

01582 832 119

lamburnxturner

Professional and friendly service  
specialising in accounting and tax for  
the small business or individual.

Lamburn & Turner  
Chartered Accountants & Chartered Tax Advisors  
Riverside House, 1 Place Farm, Wheathampstead, Herts, AL4 8SB.  
Tel: 01582 834850 Email: [enquiries@lamburnandturner.co.uk](mailto:enquiries@lamburnandturner.co.uk)

Osteopathy • Cranial • Acupuncture • Taping

**Aldwickbury Clinic**

Adults Babies Children

**Claire Mckenna**  
**Bsc (Hons) Ost Med DPO**  
Registered Osteopath/Paediatric  
Specialist

**07725 555 105**

7 Long Buftlers, Harpenden, AL5 1JF  
[www.alldwickburyclinic.co.uk](http://www.alldwickburyclinic.co.uk)



# SUMMER — of open — GARDENS

**APRIL-SEPTEMBER 2016**

**Proud of your garden?  
Open your garden to friends and  
family - and help your local life-saving  
Charity**

**Call for your free fundraising pack**  
Available to individuals and gardening groups  
0345 241 7690  
or visit [EHAAT.uk.com](http://EHAAT.uk.com)  
#SOGardens

**It's free to take part - just collect  
donations on the day**



REGISTERED CHARITY 3106889

Number 120 Wheathampstead Parish Council Spring 2016