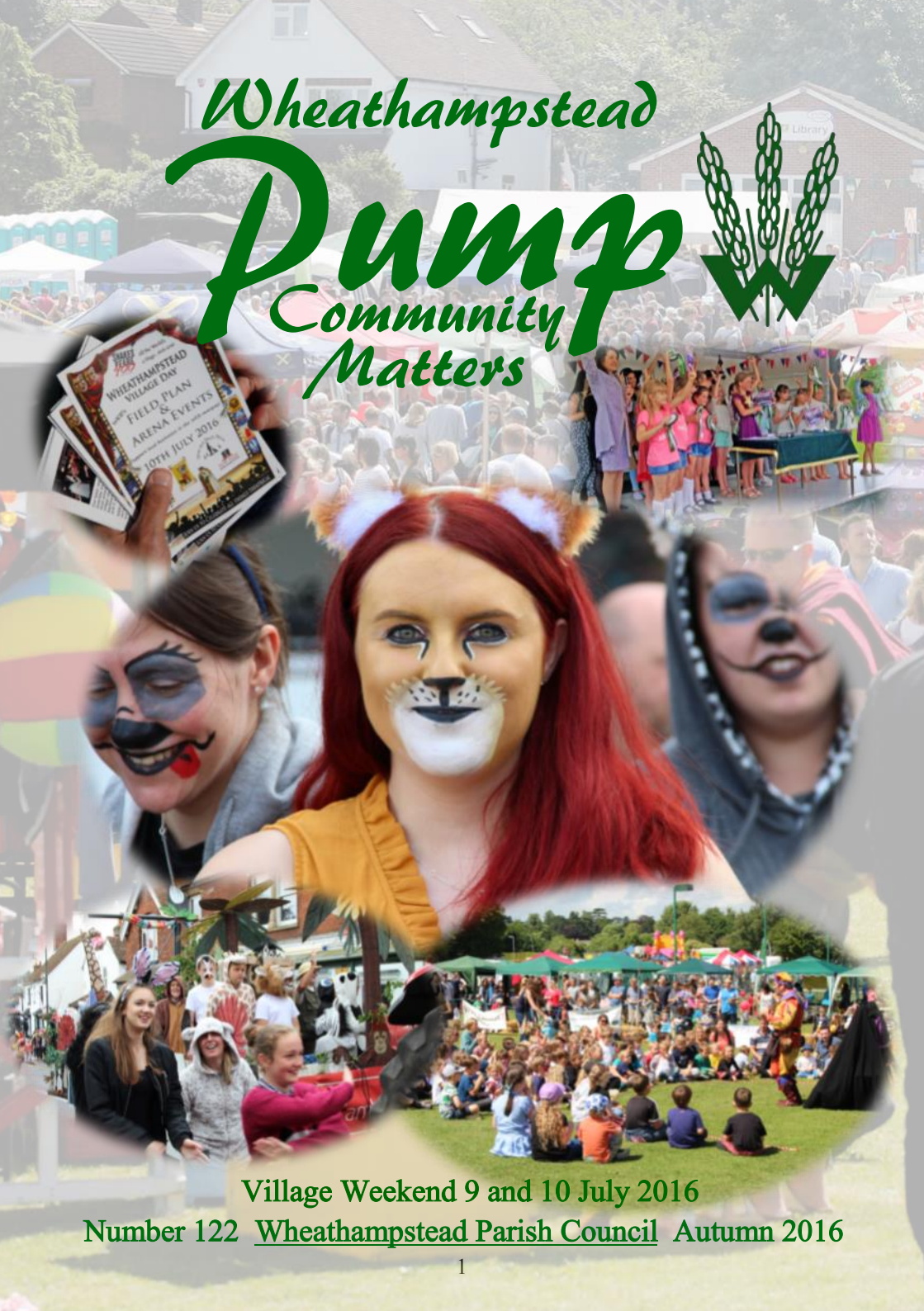


Wheathampstead Pump Community Matters



Village Weekend 9 and 10 July 2016

Number 122 Wheathampstead Parish Council Autumn 2016

JOHN CURTIS
Estate Agents UK

in association with
HAMPTONS
INTERNATIONAL

**Call 01552 839200
and let us take you to
the London market!**

🐦 @sellmyplace 📘 John Curtis Estate Agents UK

Cassidy & Tate
Your Local Experts

If you are looking to sell or let your property please call Nick Masters on 01582 831200 for realistic advice.

webstract

Luxury Home Cinema & Advanced Smart Home Technology

- Intelligent Lighting
- Multi Room Audio & Video
- Control Solutions
- Security

For further information or to arrange a home cinema experience at our demonstration facility in Wheathampstead, as pictured above, please call us on 01582 839210 www.webstract.co.uk

Rainbow House
Nursery & After School Club
Where children come first
Tel: 01582 831991; email: rainbowhwt@hotmail.co.uk

Visionary
ACCOUNTANTS
Rewarding Your Efforts
01727 730550

Gladstone Place, 36-38 Upper Marlborough Road, St Albans, AL1 3UU

Suzuki piano lessons
with Music Theory
from the age of 4 years old

Claire S Partington
BA(Hons) Music

MEMBER OF THE BRITISH SUZUKI INSTITUTE
AND
INCORPORATED SOCIETY OF MUSICIANS

C# Music Tuition
Building Sound Foundations

claire@csharpmusic.co.uk
www.csharpmusic.co.uk
01582 832800

The Pump news in brief

Memorial Hall Upgrade – Phase I

Some residents will know that the Memorial Hall was closed for refurbishment for four weeks earlier this summer. The upgrade included installing a completely new audio-visual system that will allow high quality films and presentations to be shown on a new 4m screen. A high resolution projector has been permanently installed and hangs from the ceiling; new speakers and a new hearing loop have also been installed.



The hall suffered from sound reverberation and so we have had acoustic baffles installed to reduce the echo. All of the controls are accessible from the front of the stage so there is no necessity to take cables back to amplifiers or the projector. The new system with improved acoustics provides us with a near cinema-quality audio-visual system.

We have replaced the stage and window curtains and there is a new electric stage curtain mechanism to replace the old one which was failing. The hall has been completely rewired, replacing the original 1960s cabling and has also been redecorated and has new energy-efficient lighting.

These recent improvements coupled with the upgraded stage lighting that was installed a couple of years ago mean we have one of the best theatre facilities in the area.

Bury Green Garden

We're pleased to say the Parish Council's beautiful Bury Green Garden is looking stunning at the



moment. Lots of people have enjoyed sitting and relaxing in the garden, but we need more people to join the 'Friends of Bury Green Garden' to help to keep it in trim. We're looking for volunteers who can give about an hour of their time once a month to help keep the weeds in check, occasional watering, pruning and mulching. We're not looking for experienced gardeners, just people who are keen to help and who are available either during the week or at weekends to join our team of people who love the Garden. It's a great way to learn more about gardening, get some light exercise and achieve something great in the village. Please contact Louise at info@wheathampstead-pc.gov.uk for more info.

Dates for your diary

Saturday 3 September Blood Transfusion Service, 10am to 4pm, the Memorial Hall Car Park.

Saturday 10 September WOSV East Lane Car Park 10am (see page 8 for more information).

Saturday 10 September Horticultural Society Annual Show, 9am to 5pm, the Memorial Hall.

Saturday 17 September Litterblitz volunteers, 9.45 to 12 noon, contact Eddie on 629494 for more info.

Friday 7 October Help for Heroes Quiz Night, 7pm to 10pm, the Memorial Hall.

Saturday 8 October WOSV Butterfield Road 10am.

Saturday 8 October Amwell Fundraisers event, 7pm to 10pm, the Memorial Hall.

Thursday 13 to Saturday 15 October Dramatic Society Play, 7pm to 10pm, the Memorial Hall.

Thursday 27 October U3A "Treasures of the archives—Wheathampstead", 1pm to 4pm, Memorial Hall.

Thursday 27 October: WPPG Speaker, EN&T Surgeon Adam Frosh, 7.30pm, the Memorial Hall.

Thursday 24 November Lights-Up, 5pm to 8pm, High Street.

Calling all residents...Parish Council notice-boards: replace, refurbish or remove?

Are our notice-boards regarded as extinct dinosaurs, relics of a bygone age, when in this day and age we rely on digital communication (websites, email, Facebook and Twitter)? Or are they an important link for residents living in outlying areas? Do you bother to check your local board?

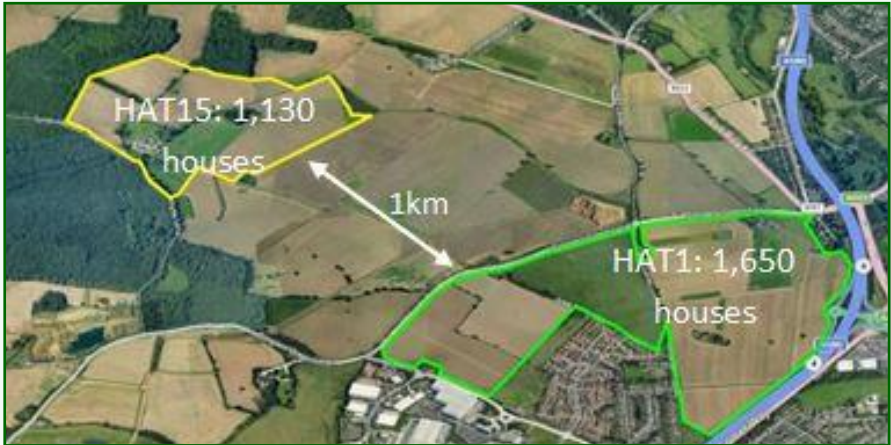
Around the Parish we have eleven notice-boards, all of which are in need of renovation or renewal: at the Memorial Hall, Caesars Road, Hilldyke Road, Butterfield Road, the Elephant and Castle, Meadway, Castle Rise, Folly Fields, The Broadway, East Lane Car Park, and the bus stop outside St Helen's Church on the High Street.

The Parish Council would like your help. We plan to leave some in place; however, we are looking for feedback on the rest. Let us know what you think.

Contact us on 01582 832541 or info@wheathampstead-pc.gov.uk

Symondshyde Great Wood

The Parish Council is concerned about proposals by Welwyn Hatfield Council to build 1,130 houses next to Symondshyde Great Wood between Wheathampstead and Hatfield as part of the Welwyn Hatfield Strategic Local Plan.



This standalone housing site would cover 52 acres and would be double the size of Sandridge. The Parish Council has written to Welwyn Hatfield Council to express concerns, particularly a lack of consultation and awareness among village residents, the proposal not being consistent with key government planning policies on the Green Belt and Sustainable Development, the impact it would have on a valuable area of highest quality Green Belt land, and the sustainability issues of creating an isolated settlement which would encourage reliance on cars in an area that already accommodates significant volumes of traffic.

Welwyn Hatfield Council has advised that a formal consultation will begin on **30 August** for eight weeks. You will need to pre-register at www.consult.welhat.gov.uk/common/register.jsp if you wish to comment. You can contact a campaign group called www.save-symondshyde.co.uk who have maps and further information about the proposal.

Village Weekend 2016—See front and rear cover for pictures

The Talent Show on Saturday 9 July, won by Ria Boynton, saw the start of another brilliant Village Weekend. A packed crowd then enjoyed Picnic on the Meads while being entertained by Harpenden Light Opera Society, Revellers Steel Band, and a rousing finale from Band 7 before the closing fireworks. A slightly drizzly Sunday morning brightened up in time for the parade up the High Street, with many colourful floats celebrating our theme of “All the World’s a Stage”, led by the star turn of Kevin the Jester all the way up the hill on stilts! Thanks to all who took part, especially the Dawes family and The Swan – they really made this a special start to an afternoon of fun on the Marford Field. A huge crowd enjoyed refreshment outlets, games, stalls, and the programme of arena entertainment, which included performances by Top Hat Stage School, Shakespeare-themed children’s races, and dogs showing their amazing skills at herding ducks.

Our thanks to all the volunteers who worked so hard to make the weekend a big success, and to the many local businesses whose sponsorship of the fireworks (organised by WEB) helps to make this event a huge success. Could you help with next year’s event by volunteering as a marshal for one hour?

Please contact Louise at info@wheathampstead-pc.gov.uk for more info.



Could you be a volunteer driver?

For a long time, village residents have been giving local people lifts to medical appointments at all local hospitals, surgeries and clinics. The Wheathampstead Community Group provides this service for those who cannot use public transport. A small charge is payable to the driver to cover the cost of petrol. At present, there are 38 drivers on our list. This may sound an adequate number but, with restrictions including regular availability, holidays, illness, long appointments needing two drivers and the challenges of wheelchairs, walkers and distant venues, finding a suitable driver is often difficult.

Over the past year, 620 trips have been made. Drivers wait for their clients, accompanying them when necessary to their clinics, and then bring them home safely. This is an essential service, most rewarding and much appreciated by the community.

BUT, we would like more drivers. Could you be one of them? If you enjoy driving and meeting people, please consider volunteering. For further information, please contact Ann on 833186.

Nomansland Nature Quest events for local school children

Nomansland Common is a wonderful place, full of interesting history and wildlife: prehistoric glaciers and rivers, thousands of years of grazing, territorial disputes, a Wars of the Roses battle, a highwaywoman, prize-fighting, horse-racing, rare heathland species. And it's on our doorstep.



In June two classes of junior school children from Beech Hyde School had Nomansland Common as their classroom and playground for the day. The children learned about history and wildlife, while developing their team-working skills. They designed and decorated team tabards, then searched for some common and rare wildlife, explored the

climbing tree, built dens, and fired home-made catapults, bows and arrows.

Older people (like me) may cherish memories of an unconstrained childhood spent largely out of doors and unsupervised by adults, exploring our surroundings, climbing trees and making camps. We may regret that today's children don't have these kinds of unstructured experiences.

You may not need to worry. I can report that young people can have huge amounts of fun in the outdoors. They are full of ideas; they like climbing trees and making dens; they don't mind getting wet and muddy; they are interested in nature and history; and they have real team spirit.



A big thank you to Wheathampstead Parish Council who funded these events.

Mark Carter, volunteer

Wheathampstead Open Spaces Volunteers (WOSV) News

As I write I notice a marked change in activity from our local farmers. Hay is being cut and baled and crops such as barley are starting to be harvested.



This reminds me that it will soon be time for our open spaces and local nature reserves to have their annual cut. Apart from our amenity areas most of our grassland is cut once a year. Leaving wild grassland uncut is vital for a variety of wildlife. It ensures the maximum time for plants to flower and set seed and it provides a maximum period for late-flowering species to flower and set seed. All of this has a significant knock-on effect on our wildlife. Not cutting grass frequently allows grasses and other flowers such as plantain to seed and provide food for birds. Other plants such as daisy and buttercup provide nectar for bees and hoverflies. There are over twenty species of bumblebee in the UK and they are important pollinators, however a significant number of these species have declined by more than 80% in the last 50 years.

Over time, cutting the grass once a year and removing the cuttings so that soil remains unimproved will enable other flower species to establish themselves and species that have remained dormant can also reassert themselves. Long grass is good for invertebrates which in turn provide food for birds and mammals, moths, butterflies and craneflies, and provides a protein-rich food source for them and their offspring.



The Meadow Brown butterfly is one of Britain's commonest butterflies, however it roosts in long grass and it lays its eggs in grasses that are abundant in uncut grassland. So the commonest of butterflies could be affected by regular cutting. Even the commonest of birds such as the Blue Tit, which loves the eggs and caterpillars found in the grass, can be affected by regular cutting. This

annual cutting method is outlined and supported in the Parish Council's management plans for our open spaces.

WOSV is a voluntary group that aims to augment these plans by helping to maintain our open spaces. Please contact the Parish Office at info@wheathampstead-pc.gov.uk for more information.

Peter Ryan, WOSV Coordinator



Hertfordshire County Council's Locality Budget Scheme now available for community projects, groups and charities

Local community groups and charities could get a funding boost from their local county councillor thanks to Hertfordshire County Council's locality budget scheme.

Each of Hertfordshire's 77 county councillors has been given a fund of £5,000 to spend on worthwhile projects in their area.

Teresa Heritage, Cabinet Member for Localism, said: "The locality budget scheme has given millions of pounds to thousands of community projects since we launched it in 2009, supporting local good causes and making a real difference to people across Hertfordshire.

County councillors work closely with local communities to identify local priorities, so if you know of a local community group or charity that could benefit from a funding boost, get in touch with your local county councillor and let them know."

Since the locality budget scheme was launched in 2009, more than £5,000,000 has been given to more than 7,500 community projects, with the average grant just over £600.

The organisations that have benefitted have included local groups such as sports clubs, village halls and arts groups as well as larger charities such as domestic violence charities and organisations supporting the elderly.

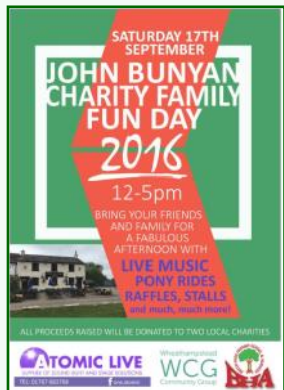
For more information on how to apply for funding under the scheme visit www.hertfordshire.gov.uk/localitybudgets.

Celebrating Older People in St Albans

St Albans City and District Council is working in partnership with Older Persons' Activity Learning and Safety and older people's groups to celebrate older people in the District at the Alban Arena on Wednesday 19 October 2016 from 10am to 1pm.

Come along to find out information on local services, community groups and lifestyle ideas. All welcome, free tea, coffee and cake.

For more information contact Jenny Titmuss on 01727 296146 or at jennifer.titmuss@stalbans.gov.uk.



The John Bunyan Charity Fun Day

In aid of Wheathampstead Community Group and Beech Hyde School on Saturday 17 September, 12 to 5pm.

Come and enjoy live music, pony rides, face painting, raffles, stalls, and much more. All the money raised

will go to two local charities, Beech Hyde School and Wheathampstead Community Group.

Bring your family and friends for a great afternoon of fun.

HERTFORDSHIRE FIRE AND RESCUE SERVICE

'ON-CALL' FIREFIGHTERS NEEDED

WANT TO HELP YOUR LOCAL COMMUNITY
WANT TO BE PART OF A TEAM
ENJOY BEING ACTIVE
WANT TO LEARN NEW SKILLS

WHEATHAMPSTEAD Fire Station

Find out more at www.hertfordshire.gov.uk/RDS, visit or call the station Tuesday evenings between 7-10pm 01582 832 123 or call 01438 715 119 during office hours Mon-Fri



From: 12:30 to 4pm
On: Sunday
4 September
At: County Hall
Pegs Lane
Hertford
SG13 8DN

Crash car simulator
Police & fire bikes
Smoke house experience
Air ambulance landing
Emergency vehicles
Competitions
Bouncy castle

Plus more on the day



@roadsafetyherts



Free admission & parking






LOCAL RENEWABLE ENERGY SPECIALISTS

OUR SOLAR PANELS AND BIOMASS BOILERS CUT CARBON & SAVE MONEY

SOLINVICTUS

01727 840555 OR SOLINVICTUS.CO.UK

ENJOY PEACE OF MIND AND ALL LIFE HAS TO OFFER

Successful business woman seeking 5 working partners to work part-time from home, in conjunction with family commitments or current career

If you have a positive attitude and the drive to develop an extraordinary lifestyle please call

Lesley Nash - 07761 049422

FOR ALL YOUR OUTDOOR AND INDOOR MAINTENANCE...

The Handyman Can

- Put up shelves, Blinds, Mirrors
- Build flat packs
- Repair leaky taps
- Fit locks
- Wallpaper, Paint
- Paint and repair sheds
- Cut grass, trim hedges etc...



Local, friendly, honest and reliable

No job too small £15 hourly rate

Call David Nash 07759 908918



Wheathampstead Osteopathic Clinic

- Back, Neck & Shoulder Pain
- Hip, Knee & Ankle Pain
- Sciatica/Neuralgia
- Postural Assessments

Registered Osteopath B.Sc (Hons) M.Ost
The Village Surgery, Marford Road
Wheathampstead, AL4 8BT

07758 892185

www.wheathampstead-osteoclinic.co.uk



EXPECT THE UNEXPECTED

We're here to protect your financial future.

Please contact:
Mike Perry
07525 846614/
01442 450403
mike@mjpgfcltd.co.uk



RJSpiers Carpentry

Making wood work

Tel: 07979 225096

www.carpentrybyrob.co.uk

- Kitchens
- Doors
- Flooring
- Stair Parts
- Bespoke Alcove Units

 @SpiersCarpentry
 R J Spiers Carpentry

City& Guilds Qualified

Wheathampstead & District Preservation Society



working to protect
all that's best
about our village

Please join us—the more members we
have, the louder our voice. It only costs £5

For more info or to join us, visit

www.wheathampsteadpreservation.org.uk

Life & Careers Coaching

Is there anything in your life you would like to
improve? Would you like to have more fun?
Improve your career? Earn more money?
Would you just like to be happier?

Norman Whitwood Life Coach
Wheathampstead 01582 833 360



www.lifeandcareerscoaching.com



EDWARDS ASSOCIATES
ADVICE LLP

Call **Rob Howes** for independent
financial advice in the village

THE OLD PRESBYTERY, MARFORD ROAD,
WHEATHAMPSTEAD, HERTFORDSHIRE, AL4 8AY

TELEPHONE **01582 833778**

EMAIL rob@edwardsassociates.co.uk

www.edwardsassociates.co.uk

Authorised and Regulated by the Financial Conduct Authority

Mr Green

Landscaping and Lawncare

Professional, local and friendly.
For a free quotation call:

07539 441 055

www.mrgreenlawncare.co.uk



Retromum Catering

**Food & Service exclusively centered around
YOU as an Individual!**

Celebrations, Parties, Weddings, Wakes,
Christenings, Communion, Festivities
Corporate, Office & Offsite, Conferences,
Launches, Promotions, Picnics, Barbecues,
Outside Events, Complete Event Planning

01582 833219 / 07949 700969

Email: retromum.catering@gmail.com

Facebook: Retromum Catering

Wendy Griffith - Arbonne Independent Consultant

VEGAN – SWISS FORMULATED - PURE – SAFE –
BENEFICIAL – BOTANICAL

Nutrition
Skincare
Cosmetics



Wendy Griffith: 07891120553

Area Manager – ID: 441035483

wendy@wendygriffith.co.uk

www.wendygriffith.arbonne.com

**Need friendly, professional
Help with your PC or Mac?**



**Wheathampstead
Computer Services**

Call Mark today on

01582 831 533

www.wcs-IT.co.uk

Osteopathy • Cranial • Acupuncture • Taping

Aldwickbury Clinic

Adults Babies Children

**Claire McKenna
Bsc (Hons) Ost Med DPO
Registered Osteopath
Paediatric Specialist**

07725 555 105

7 Long Butlers, Harpenden, AL5 1JF
& Breathing Space, Harpenden

www.aldwickburyclinic.co.uk



PUSH ME FIT Fitness

Total toning on Thursday at 8 p.m.

Pilates on Friday at 1.30 p.m.

Mead Hall, East Lane, Wheathampstead

Personal training

Get one to one support and work-out
tailored to you at your convenience.

Please contact Marta on 07769661177
or email pushmefit.herts@gmail.com

COMPLETE GUTTERING SERVICES

We service and maintain gutters
Seal their leaks and stop their splutters
Or should they need to be replaced
We cover that, efficiency not waste

We replace fascia's, cover them too
New upvc bright and shiny just for you

You can e-mail or phone any time
Just leave a message, it needn't rhyme

complete-guttering@gmail.com

01582 831651 07941 437504



Gentleman's Barber Shop

Opening Times

Monday-Wednesday 9.00am-5.30pm

Thursday 10.00am-7.00pm

Friday 9.00am-7.00pm

Saturday 8.00am-4.00pm

32 High Street, Wheathampstead, AL4 8AA Tel: 01582 832844

allegro blinds

Formerly
Apollo Blinds



**Trading locally for 25yrs
For all your blind needs**

**Rollers,
Wood Blinds
Verticals, Venetians,
Pleated, Romans, Velux,
Plantation Shutters,
Patio Awnings/Canopies
Conservatory
Blinds**

www.allegroblinds.co.uk

Call for a FREE QUOTE 01582 831052



CAPTAIN TORTUE GROUP

Would you and your friends like to view the latest French Fashion in the privacy of your own home and earn commission? If so, call Rusty on 0774 898 4739

www.captaintortuegroup.com

SOPRANO SOLOIST

Linda Wener

To sing at: Weddings
Funerals
Concerts

Extensive repertoire, Professionally trained

Telephone: 01582 833 500

www.solosoprano.co.uk

Email: linda@solosoprano.co.uk

Fenlon & Co

YOUR LOCAL ACCOUNTANT

- Self Assessment tax returns
- Accounts for self employed
- Payroll management
- Accounts for Ltd Companies
- VAT returns

6 High St. Wheathampstead, AL4 8AA
Tel: 01582 831234 day;
01727 759334 eve.

Confident with your camera?

Are you baffled by buttons, discouraged by dials, flummoxed by F-Stops?

Then come along to a photography workshop and learn how to get the best out of your camera and take better photographs.

Affordable - local - accessible to all

2hr evening workshop

'Introduction to photography'

Call Ian or Emma for information and dates:
01582 469003

IAN SCOTT PHOTOGRAPHY

www.ianscottphotography.co.uk



Africa, India & Latin America

Creating unforgettable experiences

01582 766122

info@2by2holidays.co.uk

www.2by2holidays.co.uk

BIRTHWELL with JOAN MILLS

Wise Hippo HypnoBirth Instructor,
Doula, Reflexologist & Nurse

djoanmills@yahoo.co.uk birthwell.co.uk

07841 054708 01582 620209



Improving the river at East Lane

The River Lea at Wheathampstead



This is one of the major rivers of Hertfordshire. Starting at Longgrove north of Luton, it flows some 52 miles through Bedfordshire, Northamptonshire and north to Cambridgeshire, where it becomes the sea navigation, and discharges into the Great Ouse at New Cross.

The River has been investigated when the Lea had a high spring from the confluence of the Thames and the Lea and crossed in the last century. Although a bridge between King's Lynn and the Great Ouse (the Lea) in 1858, the river formed part of the boundary between Essex, England and the Counties now are standing on the same side.

Until the influence arrived in the mid 19th century, the river was essential for trade and for travel, as well as providing power through its waterfalls and flows in the form of fish. There was a flourishing trade in salmon, which was both fed by spring and as found at Bedford, Carterham, Hempton, Casswell, Kippax and Luffield.

The river has been managed, diverted, dredged, and controlled for thousands of years in some situations, such as here. This has resulted in a less suitable habitat. We are working to remedy this by removing obstructions to increase light to the river and by other measures.

Fish: The river is well stocked with fish. This larger area that you may see from here are likely to be chub, barbel or roach. The smaller ones are probably dace. Although there are also some carp.

Beetle: At this location, you can see one called dullest but here a habitat and for grey snails and for the longhorns that live along the banks of the river. Look to your left, there may be a water crowing waterbug in the bed.

Mammals: Mammals which were once abundant in this area had been wiped out, here as elsewhere, by the ancient monks that had managed the river. There are however many otters in the county, with some on the local rivers. Otters have had some very local recovery years.

Flora: Increasing the amount of light to the river will encourage the growth of water crowfoot, which grows beneath the surface and also in the River's foot waterways, yellow flag and Purple Loosestrife, as well as water and reeds. These will, in turn, attract dragonflies and damselflies. You can see watercress, watercress at the Mill pond.

East Lane Car Park is managed and managed by Wheathampstead Parish Council. www.wheathampstead.gov.uk 01462 833333

Recent visitors to the East Lane Car Park may have noticed lots of activity in the river and along its banks, including the new information board.

This stretch of the river has been straightened and dredged in the past and for many years has been overshadowed by excessive

undergrowth on the south bank. The result was that the water flowed in deep shade and at a constant speed and depth with none of the variations that occur in the natural state and that wildlife relies on. The river had become little more than a dark canal with very limited wildlife, either flora or fauna, in the water or on the banks.



To tackle these problems, the first step has been to increase the light that reaches the river by removing or cutting back excess vegetation, branches etc on the south bank. This work was started during last winter. The results are already apparent in an increase in the number and variety of invertebrates and plant life in the river bed and hence of fish and bird activity. This work is continuing now that the nesting season is almost over.



We have also installed a number of 'deflectors' in the river bed. As the photo shows, these are large logs fixed to the river bed that point at an angle of about 45 degrees upstream. The effect is to break up the flow of the river so as to vary its speed and depth. This provides better and

Continued on next page...

... continued

more varied habitats for the organisms that live in the river, including the fish. Next, you will see a number of 'brash build-outs' along the river bank, as in the photo. These are designed to trap silt which will build up over time until it provides a base for vegetation to take root. As a result, the bank begins to redevelop the bends and curves that it once had. This, again, improves the habitats.

We will be monitoring the effects of this work in the coming months and years and will make regular reports. The work is one element of the Upper Lea Catchment Management Plan that is managed by the Herts and Middlesex Wildlife Trust and supported by Wheathampstead Parish Council.

For more information, go to <http://www.riverleacatchment.org.uk/> and click on 'Upper Lea'. If you would like to help with this or any other voluntary environmental work in the parish, please email info@wheathampstead.gov.uk.

Patrick McNeill, Meads Ranger and Volunteer.

New way to report or get information about a power cut in your area

On 6 September a new national phone number "105" will be launched by electricity network operators for customers to call should they need to report or get information about a power cut in their area.

Dialling 105 will put customers through to their local electricity network operator – the company that manages the cables, power lines and substations that deliver electricity into homes and businesses in your area.

105 is a free service for people in England, Scotland and Wales.

Customers can call 105 no matter who they choose to buy electricity from, or if they spot damage to electricity power lines and substations. If there's a serious immediate risk, they should call the emergency services too.



WEB is looking to the future

Has anyone out there got a crystal ball?

The Wheathampstead Business Group was invited by the Parish Council to get involved in the creation of the Neighbourhood Plan (NP) by the 'Neighbourhood Plan Steering Group'.

Our specific interest is trying to think of improvements that could be made to benefit local businesses over the next 20 years.



Having a crystal ball would be ideal, but failing that we would welcome ideas and comments from anyone in the local community, especially from local businesses.

Some of the ideas currently being considered include:

- setting up an Industrial Park/Business Centre
- improvement of roads infrastructure
- policies for a Sustainable Accessible Fairtrade Ecological (SAFE) community
- policies for the protection and improvement of services (e.g. Post Office, cash machines, parking, etc.)
- business investment funding
- creation of meeting facilities and drop-in centre
- free local wifi.

If you want to know more about WEB's activities on the NP or want to get involved please contact Richard Brett (WEB's representative on the project) at secretary@wheathampstead.org.uk or come along to one of WEB's meetings. If you want to know more about the NP in general please contact the Steering Group's Chairman David Johnston at info@wheathampstead-pc.gov.uk.

For those of you not familiar with WEB, our aim is to help local businesses for the benefit of the whole community. Local businesses and residents are encouraged to get involved, support businesses locally and help make Wheathampstead a better place to live. We meet on the third Tuesday of every month in the back room of the Swan at 7:45pm and anyone is welcome to attend. More information on WEB and its activities can be found online at www.wheathampstead.org.uk.

Adam Collis, chair@wheathampstead.org.uk



Why not attend leisure courses with Harpenden WEA?

Like to keep your brain active? Want a stimulating leisure activity to keep you alert and interested in the world?

The Harpenden Branch of the WEA (Workers Educational Association) can help. Every year we run courses on a large number of topics. The courses meet for 1½ or 2 hours a week, and last for either nine or eleven weeks. No qualifications are required to attend, and there are no exams! Learning with the WEA is a friendly, informal and enjoyable experience.

Courses starting from 19 September 2016 include:

- Monday mornings, Creative Writing - fiction fun!
- Monday afternoons, Early Civilisations of the Middle East
- Tuesday mornings, English Music from Elizabeth I to Elizabeth II
- Tuesday afternoons, Current Affairs / Talking Politics (Part 1)
- Wednesday afternoons, Art, Architecture and Society in the 19th Century (Part 1)
- Thursday afternoons, Commonwealth Writing (Part 1)

A day course Saturday 19 November, "1666 - England's Annus Horribilis".

Courses meet in the Randall Room, Harpenden Trust Centre, 90 Southdown Road, Harpenden, AL5 1PS.

For more details about the courses in Harpenden, visit www.weaharpenden.org.uk, or contact the Hon. Sec. R W Spence, on 01442 254375, email robertspence@ntlworld.com.

Finally, at our AGM there will be a talk by Denis Kelly entitled "The Man Who Ate His Boots - The Search for the North-West Passage", followed by a social gathering and light refreshments, at St Nicholas Parish Church Hall, Church Green, Harpenden, AL5 2TP, Friday 7 October 7.30pm to 10.00pm

The WEA is the largest voluntary provider of adult education in the UK. It was founded over a hundred years ago to enable working men and women to realise their full potential through learning.





How's your money management? Ever had too little money left for the month? The CAP Money Course aims to assist anyone who would like to have more control over their finances. Working with Christians Against Poverty, St Helen's and St Peter's churches offer practical solutions to people of any faith or none. Non-judgmental, CAP doesn't tell anyone what to do with their money, so the individual has total control, all of the time.

Experience from the work done through Credit Union in our own Parish shows how widespread the problem is of bad debt. We fear that we may be reaching only the tip of the iceberg, with people resorting to pay-day or other high interest loans from commercial lenders. With this in mind, a small group of people has trained and committed to helping anyone who would like to improve their own money management.

The course is suitable for: anyone in or out of work; people who might be struggling or 'just managing'; retired folk; younger couples; people living alone; students about to embark on university and living away from home for the first time.

Sessions will run from a local venue at a convenient time in the evening, last a couple of hours, are completely free, and include all materials. For further information, pick up a CAP leaflet from either Church, email moneycourse2016@gmail.com or call 834031.

Youth News

Brownies enjoyed another successful Brownie duck race at Village Day!

Every year they float 1000 plastic ducks down the river and have fun collecting them on The Meads. Numbers from the ducks are sold by all Guiding units before Village Day and the Brownie stall on the afternoon. Prizes this year included a day at Rachel Jeffrey's jewellery school and bath-time goodies from The Manor Pharmacy. Brownies raised over £450 which was divided between Guiding units and Herts Air Ambulance.



Top Hat Stage School had a busy July. The students, who range from 5 to 15 years, performed their final showcase “Electric 80s” at the Memorial Hall on Wednesday 6 July.



Students also took part in the Village Day parade and performed songs in the arena. Principal Warren Bacci said: “I was so thrilled with all the students. They worked hard this term and put in two fantastic performances. I was very proud”.

Top Hat will be accepting new students for their

Winter term where they will be working on “Dick Whittington”. Term begins 21 September and is open for any child aged 5 and above with a passion for performing arts. For more visit www.tophatstageschool.co.uk.



Friday 26 August	10am to 12noon
Wednesday 31 August	2pm to 4pm
Saturday 3 September	3pm to 5pm
Thursday 8 September	10am to 12noon
Monday 12 September	2pm to 4pm
Tuesday 20 September	3pm to 5pm
Saturday 24 September	10am to 12noon
Friday 30 September	10am to 12noon
Wednesday 5 October	2pm to 4pm
Saturday 8 October	3pm to 5pm
Thursday 13 October	10am to 12noon
Monday 17 October	2pm to 4pm
Tuesday 25 October	3pm to 5pm
Saturday 29 October	10am to 12noon

Police Surgery dates at the Memorial Hall



All dates and times are subject to operational requirements.

**PCSO 6021
Che Ponton.**

Sponsor a bench...

The Parish Council is inviting people to come forward to sponsor a bench, which will be placed on the Rectory Copse area behind St Helen’s Church.

Please contact the Parish Council Office at info@wheathampstead-pc.gov.uk if you would like more information.

Clerk to the Parish Council

Julia Warren, Parish Council Office, The Memorial Hall, Marford Road, AL4 8AY.
Contact on 01582 832541 or info@wheathampstead-pc.gov.uk
website: www.wheathampstead-pc.gov.uk

Your Parish councillors

Annie Brewster	Fairways, Firs Drive, AL4 8LB	01438 832255
Gill Clark	16 Tudor Road, AL4 8NW	01582 832579
Adrian Dante	25 Wright Close, AL4 8TJ	07780 836624
David Davies	3 Cherry Tree Lane, AL4 8HP	01582 821350
Elias Habib	69 Necton Road, AL4 8LB	07925 915998
Linda Halford	35 Marshalls Way, AL4 8HZ	01582 760593
Steve Haynes	65 Necton Road, AL4 8AT	01582 629327
David Johnston	9 Brewhouse Hill, AL4 8AN	07774 211933
Tessa Reason	Croft Farm, Cherry Tree Lane, AL4 8HP	01582 832071
Judy Shardlow	28 Dale Avenue., AL4 8LS	01438 833858
Paul Wilby	35 Nurseries Road, AL4 8TP	01582 834549
Peter Woodhams	54 Butterfield Road, AL4 8QH	01582 832541

Your District councillors

Annie Brewster	As above	As above
Gill Clark	As above	As above
Sandra Wood	12 Mount Road, AL4 8BX	07919 497818

Your County councillor

Maxine Crawley	14 Saberton Close, Redbourn, AL3 7DS	01582 793760
----------------	--------------------------------------	--------------

Your MP

Rt Hon Peter Lilley	104 High Street, London Colney, AL2 1QL	01727 827201
---------------------	---	--------------

Police

Your local officers are PC1848 Arthur Wilkes and PCSO 6021 Che Ponton. Please see page 21 for Police Surgery dates at the Memorial Hall.
Call 101 for non-emergency and information, or 999 for an emergency.

Council Services contacts

To report highways matters eg salt bins, potholes, lights, road signs, abandoned roadwork signs, call 0300 1234 047 or report online at
www.hertsdirect.org/highwayfaults.

For recycling collections, fly-tipping and other local services contact St Albans District Council on 01727 866100 or visit
www.stalbans.gov.uk and select Local Information Service.

I ♥ MY
Award winning!
Pharmacist

Repeat Prescriptions?



No need to visit the surgery every time...
Just use our electronic prescription service

manor pharmacy

health • beauty • prescriptions • advice
MAKE MANOR PHARMACY YOUR PHARMACY

Telephone: 01582 832 102



Will Writing

Will Writing
Lasting Powers of Attorney
Trusts



Affiliate member of the Society of Will Writers

Call **MIKE O'BRIEN**
01582 833778
or 07866762985

lamburnxturner

Chartered Accountants and Chartered Tax Advisors
Specialising in providing Accountancy and Tax services to SMEs

- Accounting
- Book-keeping
- Company Secretarial
- Taxation
- Business Planning
- Payroll

01582 834850

www.lamburnandturner.co.uk

tudor

DESIGN & BUILD

STAY WHERE YOU ARE



EXTEND REBUILD RENOVATE

T 01582 629 236
W www.tudordb.co.uk

JESSAMINE MOTOR COMPANY LTD

www.jessaminegarage.co.uk

- Servicing, Repairs & MOTs **01582**
- Diagnostic Fault Finding **832212**
- Air Conditioning
- Brakes, Tyres & Exhausts
- Bulbs & Wipers

15 High Street
Wheathampstead
AL4 8BQ

Get your MOT
for £45 — just
produce this advert
when booking!

Brand New Vans and Pick-up Trucks

Experts in Finance and Leasing

All makes and models



WHITE HOT
VANS.COM

01582 484 885
info@whitehotvans.com
www.whitehotvans.com

