

The Pump

COMMUNITY MATTERS

**ANNUAL PARISH
MEETING**
WED 20 MARCH 2019
THE MEMORIAL HALL
7.30PM-10PM

**BUSES IN
WHEATHAMPSTEAD –
USE THEM OR LOSE THEM!**

**VOLUNTEER TO LEARN
ABOUT THE RIVER LEA**

**GET INVOLVED WITH THE
'BUY IT LOCAL' LOYALTY
SCHEME**

IS YOUR HOME ENERGY EFFICIENT?



Specialists in travel to
Africa, Latin America & India.

For expert advice and to start planning your
holiday ring us on **01582 766 122**
or visit www.2by2holidays.co.uk

CALL FOR A FREE BROCHURE



2by2 Holidays, 2 Place Farm, off Mount Road,
Wheathampstead, Herts, AL4 8SB



Dates for your diary

Every last Tuesday of the month Amwell Fundraisers Bingo at Mead Hall, 7.30pm. Contact Colin on 07790 639735.

Every second Saturday of the month Wheathampstead Open Spaces (WOSV) maintain and tidy our open spaces. See the parish council website (page 20) for locations.

Every 1st and 3rd Wednesday of the month Dementia Coffee Club for those living with dementia and their carers, at Mead Hall from 10.30 to 12 noon. All are welcome.

Every Thursday Citizens Advice Outreach Service (CAB), Memorial Hall, 10am-12pm. Drop in or make an appointment on 01727 811118. The Adviceline is 03444 111444.

February 21, 22 and 23 (Thursday, Friday and Saturday) Wheathampstead Dramatic Society performance of 'That Good Night' by N.J. Crisp at The Memorial Hall. Tickets can be purchased from Manor Pharmacy.

March 7 (Thursday) 'Conquering Everest' - A talk by Rob Lucas, St Helen's Church, 7.30pm. See page 14 for more information.

March 20 (Wednesday) Annual Parish Meeting. All welcome, with refreshments provided. The Memorial Hall, 7.30pm.

March 30 (Saturday) Village Pop-Up ~ Celebrating Spring! A pop-up market for local businesses selling gifts and seasonal items, just in time for Mother's Day! For more info: enquiries@styleitbeautiful.com 10am to 2pm, The Memorial Hall.

April 3 (Wednesday) Deadline for Parish Councillor nomination forms to St Albans District Council by 4pm. See www.electoralcommission.org.uk for more information.

May 26 (Sunday) Station Fun Day, Station Road. Times to be confirmed.

QUIZ TIME!

Find the answers in this edition! Email your answers to info@wheathampstead-pc.gov.uk by 28 February. A winner will be randomly selected from the correct answers and will be awarded a prize.

- 1) At least how many businesses are taking part in the loyalty scheme?
- 2) Which bus only runs Monday to Friday?
- 3) Who did Rob Lucas climb Everest with?
- 4) What is the name of the river insect pictured?

Front cover photo: Joanna Barnes Photography

I ♥ MY
Award winning!
Pharmacist

Repeat Prescriptions?



No need to visit the surgery
every time...
Just use our electronic
prescription service

manor pharmacy

health • beauty • prescriptions • advice
MAKE MANOR PHARMACY YOUR PHARMACY

Telephone: 01582 832 102

Suzuki piano lessons
with Music Theory
from the age of 4 years old

Claire S Partington

BA(Hons)Music

MEMBER OF THE BRITISH SUZUKI INSTITUTE
AND
INCORPORATED SOCIETY OF MUSICIANS

C# Music Tuition
Building Sound Foundations

claire@csharpmusic.co.uk
www.csharpmusic.co.uk
01582 832800



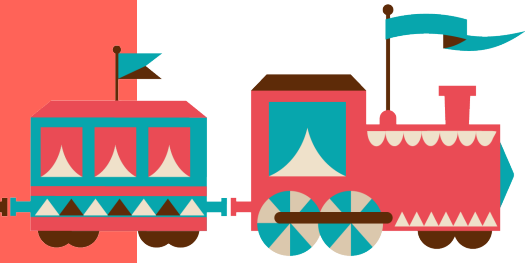
Pilates classes on Thursday at 8 p.m.
Friday at 9:05a.m, 12:30pm & 1:30pm
Mead Hall, East Lane, Wheathampstead
Wednesday at 9:30a.m. & 10.30a.m.
Southdown Methodist Church Hall,
Southdown Road, Harpenden

Please contact Marta on 07769661177
or email pushmefit.herts@gmail.com

THE BEAUTIQUE
BEAUTY ROOMS & HAIRDRESSING



Tel: 01582 831 903
www.beautiquebeautyrooms.co.uk
No. 9 Station Road, Wheathampstead, AL4 8BU



Station Fun Day - new date

Last September, the Station Fun Day was sadly cancelled at the last minute due to the heavy rain. Determined to try again, the team have rescheduled the event for Sunday 26 May. The team are pulling out all the stops to create a memorable day of fun for all ages, including lots of things to appeal to those who love trains!

Nomansland car park - tree works and car park refurbishments

The Countryside Management Service (CMS) are undertaking works to remove selected larger trees from the heathland areas. This work will commence on 11 February and will take approximately eight days to complete.

In addition, over the next couple of months works will be carried out across Nomansland Common to improve access. Ferrers Lane Car Park is going to have a facelift, West End Car Park is going to be resurfaced and a safer access route will be created from Dyke Lane to Drovers Lane.

- Ferrers Lane Car Park will be CLOSED from Monday 28 January for approximately 3 weeks.
- West End Car Park will be CLOSED from Monday 18 February for approximately 3 weeks.
- Dyke Lane works start Monday 11 March for approximately 3 weeks.

Wheathampstead's jewel in the crown

The garden, which can be accessed via Rectory Meadow or by walking along King Edward Place past the bakery, has had a facelift! The construction work for the garden is now complete and planting will follow during the spring. The garden includes a boules court, which is ready to be enjoyed.

The Parish Council hopes this garden will be a peaceful space for all and is grateful for the generous legacy from former councillor Derek Hills. Derek served as a parish, district and county councillor for many years.



Are you using your local library?

by David Ireson, library volunteer

We are fortunate to have a flourishing local library run by volunteers and 2018 has gone very well. Eight months on from the official launch, even more members of the public are using the Library. We now have three regular groups:

- Toddler Time (Monday 2.30pm–3pm)
- Knit, Natter & Know (Wednesday 10am–12pm, with a special craft session on the first Friday of every month)
- Baby Rhyme Time (Thursday 10.30am–11am).
- WCG Internet Café (Tuesday 10am–12pm)

These are proving popular with the community.

We are also running a monthly 'Theme' which will feature topics such as Holistic Therapies, Germany, Arts and Crafts, and Classic Books. These are organised by volunteers and are intended to be of general interest. If, for example, you teach German, you can advertise at the session on Germany. If you have a particular interest, we may be able to help you make some useful contacts.



Your Library has benefited from the Waitrose scheme which supports community enterprises and we are very grateful both to Waitrose and to those who supported us to the tune of £258. Thank you.

We have over 40 volunteers, including some participants in the Duke of Edinburgh Community Service Scheme, many of whom came to our Christmas party in December.

We look forward to the move to the new Fire Station which we hope will happen this year. This will involve closing the Library for a week or two while the new area is set up but we can look forward to a lovely new space with modern moveable shelving and equipment, just 100 yards from our present site. The community will be invited to a New Library Launch.

Please look at our website for information about your library and new groups. www.wheathampsteadcommunitylibrary.org.uk



Pilates classes on Thursday at 8 p.m.
 Friday at 9:05a.m, 12:30pm & 1:30pm
 Mead Hall, East Lane, Wheathampstead
 Wednesday at 9:30a.m. & 10.30a.m.
 Southdown Methodist Church Hall,
 Southdown Road, Harpenden

Please contact Marta on 07769661177
 or email pushmeft.herts@gmail.com

adpractice ltd

Architectural, Design and Planning services
 2 Mill Walk, Wheathampstead AL4 8DT
 01582 834361
www.adpractice.co.uk enq@adpractice.co.uk



Wheathampstead Osteopathic Clinic

- Back, Neck & Shoulder Pain
- Hip, Knee & Ankle Pain
- Sciatica/Neuralgia
- Postural Assessments

Registered Osteopath B.Sc (Hons) M.Ost
 The Village Surgery, Marford Road
 Wheathampstead, AL4 8BT
07758 892185
www.wheathampstead-osteoclinic.co.uk



The Barber's Yard

Elias Gomes
 T: 01582 832844
 E: elias@thebarbersyard.co.uk
 32 High Street, Wheathampstead
 Gentleman's Barber Shop

Wheathampstead & District Preservation Society

protecting all that's
 best about
 Wheathampstead



Please join us – the more members we
 have, the louder our voice. It costs just £5
For more info, or to join us, visit
www.wheathampsteadpreservation.org.uk



*Food & Service exclusively centered
 around YOU*

*Celebrations, Corporate, Dinners, Club
 & Charitable Events, Christenings,
 Themed Parties, Wedding, Wakes*

Email or call Maria Azcona
retromum.catering@gmail.com
Telephone 01582 833219 / 07949 700969



Our service is free, confidential and impartial. We can advise on virtually any issue, including:

- welfare benefits
- money and credit problems
- employment
- consumer rights
- housing
- neighbourhood disputes
- education and healthcare
- immigration and residency queries
- human rights
- family.

We arm you with all the facts and possible outcomes of different options. That way you can make the decision that's right for you. If needed, we can also offer practical support such as help with filling in forms, writing letters or negotiating with third parties.

What happens when you come to us

You'll be offered a short session with an assessor, who will identify the most appropriate way for us to help you. This could be giving you

the information you need to solve your problem yourself, or it could be making an appointment to discuss your problem further. Sometimes we might direct you to a different organisation that is better placed to help.

Specialist services

We offer a variety of specialist advice services. For more information about the services available in our main St Albans office please visit our website www.castad.org.uk

Ways to get advice

- Drop in to our Wheathampstead Outreach clinic
- Online via citizensadvice.org.uk
- Webchat via above website
- Over the telephone on Adviceline 03444 111 444 Monday to Friday 10am – 4pm.

Follow us on social media



@CAStalbans



www.facebook.com/citizensadvicestalbandsdistrict

Outreach Advice clinic
 The Memorial Hall,
 Marford Road, AL4 8AY
 Thursdays 10am-12pm

**Drop in during these times
 or ring 01727 811 118 to
 request an appointment.**

Wheathampstead's loyalty card scheme

Helping us "Spread the Money Like Honey"



As part of Wheathampstead's 'Buy It Locally' campaign, WEB (our local traders' association) has launched a Loyalty Card scheme. This will help us all to think about the importance of using local businesses.

WEB's mascot, BILLY the Bee, says there are many reasons why it's good to buy locally:

1 Get a better service. Local independent businesses care more about their reputation; you will get a better service from someone who lives near you.

2 Boost the local economy. For every £1 spent with a small independent business 63 pence is reinvested locally; by buying locally you are making your village more prosperous.

3 Create local jobs. A more prosperous business community creates more local employment; by spending locally you could be creating jobs for people you know.

4 Have more choice. The more you spend locally, the more businesses will be attracted to the village. Result? You get a wider choice.

5 Live in a nicer community. A thriving village centre means you don't have to live in a sterile dormitory town.

Have a look in your free copy of WOW (Window on Wheathampstead) or in the online directory at www.wheathampstead.org.uk. You'll be amazed at the number and variety of independent businesses there are in Wheathampstead.

More than 35 of these businesses are taking part in the Loyalty Card campaign from the start and more businesses are joining all the time. See www.wheathampstead.org.uk/billy for the full list.



You can collect your FREE card from local participating businesses and every time you make a purchase from a participating business you receive a sticker. When you have collected six stickers, including at least ONE from a non-High Street business, you can claim a free beverage at Charlie's Tea Room or a Farr Brew beer at The Reading Rooms. If you spend £100 or more, the business will give you a completed card.

Annie Brewster, our County Councillor, says "I am delighted to be able to support this community-led scheme through my Locality budget.



We are very proud of our vibrant village and this inspired scheme will help Wheathampstead residents support each other even more than they do already - and become more sustainable."

The Loyalty Card scheme is being trialled until 31 May 2019. If it's popular, WEB will extend it and see if more businesses want to take part.

Remember to....



COMPLETE GUTTERING SERVICES

Gutter Clearing & Repairs
Gutter & Pipe Replacement
Fascia & Soffit Replacement
(Check our website for further details)
www.complete-guttering.co.uk
Fast response with free quotations
All work guaranteed & fully insured
01582 831651 07941 437504
complete.guttering@gmail.com



Mr Green
Landscaping and Lawncare

Professional, local and friendly.
For a free quotation call:
07539 441 055

www.mrgreenlawncare.co.uk 



tudor
DESIGN & BUILD

QUALITY
BUILDER
CLOSE TO HOME

- Extensions
- Loft conversions
- New builds

T 01582 629 236
W www.tudordb.co.uk

WWW.CAPTAINORTUEGROUP.COM



Come and see the latest French collection at
The Old Presbytery, Marford Road
Wheathampstead
Contact Rusty 07748984739 for appt

Find out what goes on at WEB

We meet once a month in The Swan at 7:45pm on the 3rd Tuesday of every month. All are welcome.

Get informed - Make friends - Get involved



Wheathampstead Business Group

Confident with your camera?

Are you baffled by buttons, discouraged by dials, flummoxed by F-Stops?

Then come along to a photography workshop and learn how to get the best out of your camera and take better photographs.

Affordable - local - accessible to all
2hr evening workshop
'Introduction to photography'

Call Ian or Emma for information and dates:
01582 469003

IAN SCOTT PHOTOGRAPHY
www.ianscottphotography.co.uk



Community groups unite for Hertfordshire

On Friday 18 January, Bim Afolami MP chaired a public meeting in Wheathampstead to discuss the proposed expansion of Luton airport.

Many local groups, councils and residents from across the county were represented, together with experts on the environment, road and air traffic control.

Bim opened the meeting with an overview of Parliament's plans for air travel in the south east. He then invited experts to explain the background:

1. Since 2013 there has been a 90% increase in aircraft passing over Hertfordshire, which has increased noise and pollution inexorably for local residents.
2. Luton Airport has a 24-hours-a-day, 7-days-a-week operational licence, so there are many night and early morning flights.
3. East-West transport infrastructure to Luton Airport is extremely poor. Roughly 50% of the traffic on the Lower Luton Road (B653) relates to the airport.
4. The airport is owned by Luton Borough Council. It provides employment and flights for all

residents in the region. However, profits from the airport go to Luton Borough Council; they are not spread among all the counties affected. Hertfordshire suffers noise, traffic and pollution, but gets minimal financial compensation.

The meeting ended with residents, local groups and politicians agreeing to work together to get justice for Hertfordshire.

You can express your views via these websites:

Luton Airport
www.london-luton.co.uk/contact-us

Luton Airport Noise
www.london-luton.co.uk/corporate/community/noise/making-a-noise-complaint

Local transport and air pollution
www.doeni.gov.uk

Local pressure groups
www.ladacan.org
www.staqs.uk
www.stand.city

BUSES – USE THEM OR LOSE THEM!

It's a sad fact that in these days of austerity any public service that does not make a profit is often pinpointed by the council as a possible way of saving money. It's not the fault of the Parish Council, the District Council, or even the County Council. Money, or the lack of it, trickles down from the top tier – central government.

There are three main sources of income for local government in England:

- è Government grants – 55%
- è Council tax – 25%
- è Redistributed business rates – 19%

Rural bus services in outlying areas are less used than buses in more populated areas, and consequently are a target for cost cutting, particularly now that the bus subsidy is no longer a statutory requirement of councils. This is unfortunate because residents who don't drive, have mobility issues, are employed in low-paid jobs in the service industries, or are isolated pensioners, all rely on buses to travel to larger towns.

One way to help prevent the dismantling of our local bus services is to use them more. The Parish Council hope that publishing helpful information will make it easier for people to do this.

Please visit the Parish Council offices at The Memorial Hall (9.30am-12.30pm, Monday to Friday) or The Reading Rooms (12pm-9.30pm, 7 days a week) to obtain a copy of the most recent bus timetables.

Use the bus whenever you can!

Bus companies

Centrebus - www.centrebus.info 0844 351 1120 (304 and 366 services)

Uno - www.unobus.info 01707 255764 (610 and 657 services)



Which bus services can I access in Wheathampstead?

304 - St Albans to Hitchin, via Wheathampstead and Kimpton

366 - Hatfield to Luton, via Welwyn Garden City, Wheathampstead, Harpenden and Luton Parkway (Monday to Friday only)

610 - Enfield/ Cockfosters to Luton, via Potters Bar, Hatfield, Wheathampstead and Harpenden

657 - Borehamwood to Harpenden, via Shenley, London Colney, St Albans, Sandridge and Wheathampstead



Will Writing

Will Writing
Lasting Powers of Attorney
Trusts



Call MIKE O'BRIEN
01582 833778
or 07866762985



Accountancy and tax services
that fit around you + your business

- + Chartered Accountants
- + Chartered Tax Advisers
- + Chartered Secretaries

01582 834850

enquiries@lamburnandturner.co.uk
Riverside House, 3 Place Farm, Wheathampstead, Herts AL4 8SB



Cashflow Problems Keeping You Awake?

Get affordable, actionable
monthly accounts

To arrange a free consultation call:

01727 730 550

enquiries@visionaryaccountants.co.uk
www.visionaryaccountants.co.uk
2 Adelaide Street, St Albans, Herts AL3 5BH



Conquering Everest



Rob Lucas took on a particularly tough challenge when he set out to climb Everest in 2016.

The government of Nepal had closed the area to climbers after avalanches and an earthquake killed 16 Sherpa guides and 19 climbers in 2014-15; the mountain was deserted. Rob and world-famous climber Kenton Cool were the first Westerners to attempt the ascent after these catastrophes but together with two local guides they reached the summit at 8.00am on 12 May. The Himalayan Guides Association welcomed their achievement because climbing

expeditions contribute so much to Nepal's economy.

A 'local' living at Ayot St Lawrence, Rob gives a talk that is moving, exciting and inspirational. He has been a climber all his life but the ascent in 2016 was the first and only time he had tackled Everest. This extraordinary experience enables him to explain the spiritual personality of the most famous mountain in the world and the effect it has on climbers and local people alike.

Friends of St Helen's Church present: Rob Lucas in 'Conquering Everest' on Thursday 7 March at 7.30 pm in the church.

Tickets: £10 for members and £12 for non-members, including a glass of wine. Available from Margaret Pearce - 01582 833581. All proceeds towards the renovation of the church's Garrard Memorial.

Osteopathy • Cranial • Acupuncture

Aldwickbury Clinic

Adults Babies Children

Claire Mckenna
Bsc (Hons) Ost Med DPO
Registered Osteopath
Paediatric Specialist

07725 555 105

7 Long Butlers, Harpenden, AL5 1JF
& Breathing Space, Harpenden

www.aldwickburyclinic.co.uk

Cassidy & Tate

Your Local Experts

If you are looking to sell or let your property please call Nick Masters on 01582 831200 for realistic advice.

How healthy is our river?

The river in The Meads looks clean and clear but does that mean it is in good health? What are the signs of a healthy river that can support wildlife?

There are many indicators of the health of a river (eg fish, plants) but one of the less obvious is the presence of insects among the plants and stones in the river bed.

These insects are relatively immobile and can't escape the effects of pollution, so the Environment Agency uses them as a key indicator of a river's health that can alert them to pollution incidents.

The Riverfly Partnership – a national group of volunteers – supports this work by taking monthly 'kick samples' from sites along a river so problems can be quickly identified. This involves disturbing the gravel

and sediment in the river bed and collecting the results in a fine net. The species that are 'caught' are identified and counted before they are returned to the river.

A programme of 'riverfly monitoring' on the Upper Lea will start later this year and we are looking for volunteers to help us. To become an accredited riverfly monitor requires a day's training (the next course will be at Digswell in mid-April) and a couple of hours a month spare time to sample a site. If you'd like to do a bit of local 'rock pooling' and help to protect our river, this is perfect for you!

More information can be found on the Riverfly Partnership's website, www.riverflies.org, or by contacting the local organiser, Simon Stebbings, at riverflies@hmwt.org



Image: a Cased Caddis found in the River Lea

Wheathampstead during the Great War 1914-1920 10/11 November 2018

A heartfelt 'thank you' to all who have helped in any way with our research project looking at Wheathampstead during the Great War.

Our research has resulted in the Exhibition we staged in The Memorial Hall over the Armistice weekend, as well as contributing to the special 'commemorative' edition of The Pump.

In excess of twelve hundred people visited our two-day exhibition and we are delighted by the feedback we have received.

Our project will be completed by July this year and we hope to stage a final display of our research during Village Day.

You are invited to visit the History Society's pages on the Wheathampstead Heritage website, where we are sharing our research findings as the project progresses:

www.wheathampsteadheritage.org.uk/history-society-gwp.asp

If you have any further information to contribute, please email it to wheathampstead.atwar@gmail.com.

Sincere thanks,

Sandra Wood

Great War Project Lead
Wheathampstead History Society



**Call Now On
01582 832212**



**Jessamine Motor
Company Ltd**

Choose Your LOCAL Family Run Garage

- Servicing, Repairs and MOTs
- Diagnostic Fault Finding
- Air Conditioning
- Brakes, Tyres & Exhausts
- Bulbs & Wipers
- FREE Local Collection

15 High Street
Wheatthampstead
AL4 8BQ
www.jessaminegarage.co.uk
info@jessaminegarage.co.uk

**Get Your MOT
For Just £45
Just Mention This
Advert When
Booking**

**I ♥ MY
Award winning!
Pharmacist**

Repeat Prescriptions?

No need to visit the surgery
every time...
Just use our electronic
prescription service



manor pharmacy

health • beauty • prescriptions • advice

MAKE MANOR PHARMACY YOUR PHARMACY

Telephone: 01582 832 102

DOG POO BAGS GO IN BINS, NOT ON TREES!

A large number of used dog poo bags are being spotted hanging on trees, as well as in bushes and sometimes in the middle of a path.

We appreciate that dog poo is being picked up, but this only creates more work for our maintenance team and is extremely unsightly.

Remember - you can put used dog poo bags in ordinary litter bins as well as designated dog poo bins. If you don't have a bag, use a stick and flick the poo into the undergrowth - "stick and flick".

The Parish Council are no longer providing free poo bags so please ensure you take some with you on every dog walk!



**2BY
HOLIDAYS**

Specialists in travel to
Africa, Latin America & India.

For expert advice and to start planning your
holiday ring us on **01582 766 122**
or visit www.2by2holidays.co.uk

CALL FOR A FREE BROCHURE

2by2 Holidays, 2 Place Farm, off Mount Road,
Wheatthampstead, Herts, AL4 8SB



HOME LEARNING



Classroom-based learning, available only in certain places at certain times, is not the only way to access education.

ICT or Social Media on the go and at your fingertips in bite-sized sessions; you can get qualifications in your own time.

We all wish we had more time in our busy lives – racing to meet the train, trying to fit in work and socialising as well as taking a break and maybe watching the latest Netflix series. It's difficult to find time to improve our skills and gain qualifications. After all, who has a full day, or even weeks, to spend on training when you have all those other responsibilities?

- Flexible short learning sessions to fit around your life
- Skills to support your job and career goals
- Recognised qualifications
- Tutor support when you need it
- Access to a tablet if you don't have a PC (if needed)

Class2Cloud could be the solution. The Consultancy Home Counties (TCHC) brings you an online portal where you can study Maths, English,

Class2Cloud is funded through the Flexible Learning Fund.

**For more information, contact:
class2cloud@tchc.net**

**THE
BEAUTIQUE**

BEAUTY ROOMS & HAIRDRESSING

**Relax
Unwind
Recharge**

Tel: 01582 831 903
www.beautiquebeautyrooms.co.uk
No. 9 Station Road, Wheatthampstead, AL4 8BU

Suzuki piano lessons
with Music Theory
from the age of 4 years old

Claire S Partington
BA(Hons)Music

MEMBER OF THE BRITISH SUZUKI INSTITUTE
AND
INCORPORATED SOCIETY OF MUSICIANS

C# Music Tuition
Building Sound Foundations

claire@csharpmusic.co.uk
www.csharpmusic.co.uk
01582 832800



How energy efficient is your home?

A thermal imaging camera can:

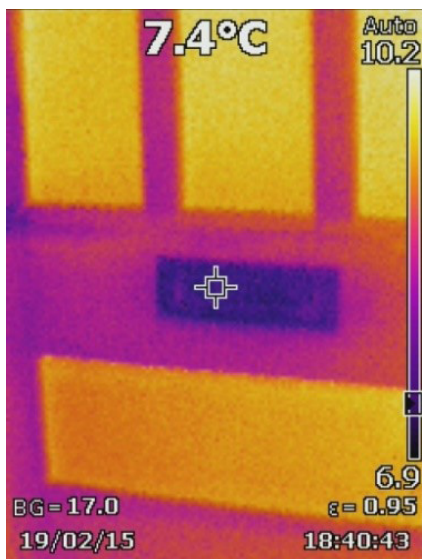
- highlight places in your home where you are losing precious heat
- identify damp patches
- identify electrical hot-spots ... and more.

WDPS (Wheathampstead and District Preservation Society) are running 1 hour presentations on how to use this camera. More than 30 people have borrowed the camera already, and have found it useful and very easy to use.

The hire of the camera is free to WDPS members. If you are not already a member, you can join for just £5 a year!

For details of our membership and/or to find out when we are holding the next training session, you can email us or visit our website below. Alternatively, you can join during one of our training sessions.

Website: www.wheathampsteadpreservation.org.uk
Email: info@wheathampsteadpreservation.org.uk



Your Council

Wheathampstead Parish Council

Julia Warren, Clerk to the Council

The Memorial Hall, Marford Road, Herts AL4 8AY.

Tel: 01582 832541 Email: info@wheathampstead-pc.gov.uk

Websites: www.wheathampstead-pc.gov.uk www.wheathampsteadheritage.org.uk

Twitter: @WhampsteadPC

Your Parish Councillors

Gill Clark	16 Tudor Road, AL4 8NW	01582 832579
David Davies	3 Cherry Tree Lane, AL4 8HP	01582 821350
Elias Habib	69 Necton Road, AL4 8LB	07522 435367
Linda Halford (Vice Chairman)	35 Marshalls Way, AL4 8HZ	01582 760593
Steve Haynes	65 Necton Road, AL4 8AT	01582 629327
David Johnston	9 Brewhouse Hill, AL4 8AN	07774 211933
Owain McKenzie	Pippins, 83a The Hill, AL4 8PR	01582 832541
Tessa Reason (Chairman)	Croft Farm, Cherry Tree Lane, AL4 8HP	01582 832071
Peter Woodhams	54 Butterfield Road, AL4 8QH	07929 558457

Your District Councillors

Annie Brewster	Fairways, Firs Drive, AL4 8LB	01438 832255
Gill Clark	16 Tudor Road, AL4 8NW	01582 832579
Sandra Wood	12 Mount Road, AL4 8BX	07919 497818

Your County Councillor

Annie Brewster	Fairways, Firs Drive, AL4 8LB	01438 832255
----------------	-------------------------------	--------------

Your MP

Bim Afolami	65 High Street, Harpenden, AL5 2SL	01582 761796
-------------	------------------------------------	--------------

COUNCIL SERVICES

To report highways matters eg salt bins, potholes, lights, road signs, abandoned roadwork signs, call 0300 1234 047 or report online at: www.hertsdirect.org/highwayfaults. For recycling collections, fly-tipping and other local services, contact St Albans District Council on 01727 866100 or visit www.stalbans.gov.uk

Wheathampstead is Whonderful

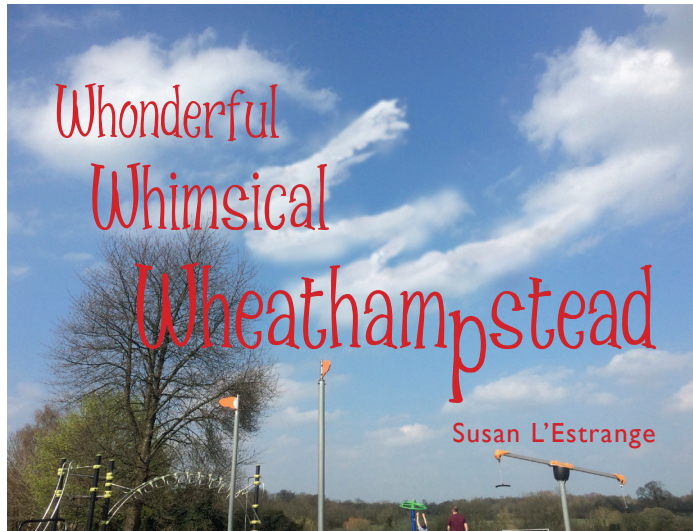
The title of this fun, slightly quirky book about Wheathampstead says it all. There are more than 600 photos for you to identify and lots of interesting facts – as well as a little ‘fake news’.

The book is proving popular with all ages – a child was recently heard complaining that she couldn’t read her copy because her grandad wouldn’t put it down – and it seems to be favourite loo-reading for many.

More than 200 were sold in the four weeks between its publication date and Christmas and it’s been nominated for an award by the WDPS.

If you haven’t got yours yet, it’s available in the High Street from the Post Office and the WI shop.

Price: £12.99



Police surgeries at The Memorial Hall

PCSO 6343 Joshua Walton. All dates are subject to operational requirements.

Email: joshua.walton@herts.pnn.police.uk **Tel:** 01707 806192

Sunday 10 February	17:00 - 18:00
Friday 15 February	18:00 - 19:00
Friday 22 February	13:00 - 14:00
Thursday 28 February	14:00 - 15:00
Sunday 10 March	12:00 - 13:00
Friday 22 March	19:00 - 20:00



Will Writing

**Will Writing
Lasting Powers of Attorney
Trusts**



Affiliate member of the Society of Will Writers

Call MIKE O'BRIEN
01582 833778
or 07866762985



Accountancy and tax services that fit around you + your business

- + Chartered Accountants
- + Chartered Tax Advisers
- + Chartered Secretaries

01582 834850
enquiries@lamburnandturner.co.uk
Riverside House, 3 Place Farm, Wheathampstead, Herts AL4 8SB



Cashflow Problems Keeping You Awake?

Get affordable, actionable
monthly accounts

To arrange a free consultation call:

01727 730 550

enquiries@visionaryaccountants.co.uk
www.visionaryaccountants.co.uk
2 Adelaide Street, St Albans, Herts AL3 5BH



Osteopathy • Cranial • Acupuncture

Aldwickbury Clinic

Adults Babies Children

Claire Mckenna
Bsc (Hons) Ost Med DPO
Registered Osteopath
Paediatric Specialist

07725 555 105
7 Long Butlers, Harpenden, AL5 1JF
& Breathing Space, Harpenden

www.aldwickburyclinic.co.uk

Cassidy & Tate

Your Local Experts

If you are looking to sell or let your property
please call Nick Masters on 01582 831200
for realistic advice.



Annual Parish Meeting

Wednesday 20 March 2019

7.30pm-10pm

The Memorial Hall, Marford Road
AL4 8AY

Find out what has been happening
in your parish and meet your Councillors.

The evening includes a talk from St Albans
District Council on the topic of food waste
recycling.

All welcome. Refreshments provided.