

The Wheathampstead

Pump



Wheathampstead Lights Up
November 28th from 6pm to 8pm



**KEEP
FIT
and
PLAY
TENNIS**

Join Wheathampstead Lawn Tennis Club!

Contact Kath Andrews: 01582 832267
kath.andrews08@btinternet.com

ADVICeworks LTD

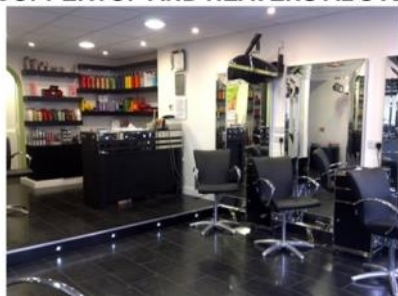
**INDEPENDENT
FINANCIAL PLANNING**

☎ 01582 799087

✉ ian@adviceworks.co.uk
www.adviceworks.co.uk

FREE ½ HOUR INITIAL CONSULTATION!

COPPERTOP AND HEAVENS ABOVE



Hairdressing and Beauty

Celebrating THREE decades of quality service to the village!

ALTERNA... REDKEN... GHD... CACI

Directly opposite Tesco

01582 832 119



**THINK
SOLAR
THINK
LOCAL**

BASED IN ST ALBANS AND
ONE OF THE MOST HIGHLY
RECOMMENDED PV INSTALLERS
ON THE YOUGEN.CO.UK WEBSITE

SOLINVICTUS

01727 840555 OR SOLINVICTUS.CO.UK

allegro blinds

*Formerly
Apollo Blinds*

Trading locally for 25yrs
For all your blind needs

Rollers,
Wood Blinds
Verticals, Venetians,
Pleated, Romans, Velux,
Plantation Shutters,
Patio Awnings/Canopies
Conservatory
Blinds

www.allegroblinds.co.uk

Call for a FREE QUOTE 01582 831052



WHEATHAMPSTEAD
NONPAREIL

KITCHENS • BATHROOMS • HEATING

Telephone: 01582 832 121
Emergency: 07971 950 712

Email: hertfordshireplumbing@gmail.com
www.nonpareilsolutions.co.uk

8 High Street, Wheathampstead,
Hertfordshire, AL4 8AA

News in Brief...

- ◇ **Butterfield Road Play Area**—The developers are submitting a revised planning application for this play area.
- ◇ **Artificial Turf Pitch**—The Parish Council is waiting for confirmation of the last tranche of grant funding for this project. We anticipate installation of the pitch on the Marford Playing Fields the New Year.
- ◇ **Meads Bridge**—Works to widen the bridge and improve access are in process and should be completed early in November.
- ◇ **Youth Shelter**—The youth shelter (which has been on loan from SADC) in East Lane Car Park has been a great success and the Parish Council is looking into putting a permanent shelter on the same site.
- ◇ **Mobile Skate Park**—After a request from a young resident, who gave a very professional presentation to the Parish Council on the value of having a skate park in Wheathampstead, the Parish Council has put in a request to SADC for the loan of a mobile skate park.

Village Weekend, 2014

Cast your minds back to the sizzling summer of 2013 and you may well be reminded of our very successful Village Weekend. We have now started to plan for 2014. Dates for your diary are Saturday 12th and Sunday 13th July.

The theme for 2014 is '**In an English Country Garden**': an opportunity for colourful floats, a range of insect and flower costumes and a chance to decorate your stall very creatively.

If anyone has any ideas for attractions, or would like to be involved during the weekend, please pass your ideas and your names to Irene in the Parish Council Office.

What's On—Dates for your Diary

Christmas Lights up—Thursday November 28 in the High Street - 6pm—8pm. The official opening will take place in the garden of **MacIntyre Home**. Make a date to join in the fun and enjoy the fair rides, stalls and wonderful Christmas Lights.

St Helen's Fair—Saturday 30 November at The Memorial Hall
11am—2pm

Top Hat Christmas Show—Robin Hood & his Merry Men at the Sandpit Theatre, St Albans **30 Nov, 1, 6, 7 December**.

Wheathampstead Community Group Christmas Singalong— Thursday 12 December at the Memorial Hall.

Performance begins at 7.45pm.

Amal and the Night Visitors—January 9th, 10, 11th.

This seasonal one-act, one hour opera by Gian Carlo Menotti is a community project hosted by The Friends of St Helens Church.

Performances in St Helen's Church - 7.30pm on 9 & 10 January, 5pm and 7pm on Saturday 11 January.

Tickets from j.golesworthy@virginmedia.com 01582 627609

Christmas Market Magic Comes to St Albans

A new magical German-style Christmas Market, set in the grounds of the Cathedral and Vintry Gardens, is coming to St Albans this November and December. The market is similar in style to well-known Christmas markets in other English Cathedral cities. It will run from 28 November through to Saturday 21 December. Opening times are 10am to 6pm daily, and until 8pm on Thursdays. There are fabulous chalet-style stalls, twinkling lights, music, merriment and *olde worlde* magic galore. Santa is coming too – visit him in his Christmas grotto. Details are available at www.enjoystalbans.com, or on 01727 864511.

(picture choristers in the snow)



SCOUT POST

The Christmas card delivery service will be operating again this year. We hope that as many people **as possible will take advantage of this** service. Last year nearly 2700 cards were delivered and this raised over £350 for the local scouts.



The areas delivered to are Wheathampstead Village, Gustard Wood, Blackmore End and the Folly Fields and Manor Road areas.

Delivery – will be on Saturday 21st and Sunday 22nd December:-

All cards must be posted by noon on Friday 20th December. The cost is now 20p per card, still very good value.

Scout post boxes can be found at:-

* Manor Pharmacy - during opening hours

Monday 2nd December to midday Friday 20th December

* St Helen's Church - Sundays 1st, 8th and 15th December, before and after the 9.30 morning service. Also at Coffee in Chancel from 2nd to 18th December

Any queries please contact Madeleine Bigmore 831853

mbigmore@yahoo.co.uk

It's a Scam!

Fraudsters want your PIN and bank card

1. A fraudster telephones you claiming to be from your bank or police. They tell you that your bank card details have been used fraudulently.
2. They suggest that you hang up and ring the bank/police back to ensure the call is genuine. **Don't be fooled**—they stay on the line. They then tell you to read out your key or PIN.
3. They send a taxi/courier to you to collect your bank card. With this and your PIN, they spend your money.

Just Remember your bank or the police will never ask for your PIN or bank card—don't give them to anybody

If you've been a victim of this crime call the police on 101.

Improvements on the Meads

The ugly overhead power lines on the Meads will soon be a bad memory. John O’Leary and his team from Morrison Utility Services, contractors for UK Power, have been working hard since mid-September to bury the new cabling.

The electricity supply (11,000 volts) comes from the National Grid to the east. Until now, the power lines have been on poles from near Sheepcote Lane all the way across to a substation in the sewage pumping plant by the Forge. The supply then divides to feed different areas of the village and beyond. The new arrangements will make all this invisible except for a green “box” in the Dell which holds the transformer that reduces the voltage to the domestic level. Hawthorn will be planted to hide this box.

The new cables, which are more than 500 metres long, are laid in trenches just less than a metre deep, except under the river where they are about four metres below the river bed. The excavations near the Forge revealed some of the massive concrete structures that were part of the old sewage works and were covered with soil when the Dell was created in the late 1980s after the works closed and the Parish Council bought the land from Thames Water. The reclamation of the Dell was awarded 1st prize in the Rural Section of the Hertfordshire Conservation Awards in 1991.

Morrison’s have also laid hard surfaces on the two permissive footpaths on the north side of the river. The crushed concrete base is finished with a compacted layer of coarse sand similar to the bridleway. These footpaths should not be used by cyclists or horse-riders and will blend in over time.

All these works have been done at no cost to the Parish Council. Morrison’s have been careful to reinstate the ground wherever possible and we are confident that the vegetation will recover within a year or two.

When all the works are finished, the footbridge will be refurbished.

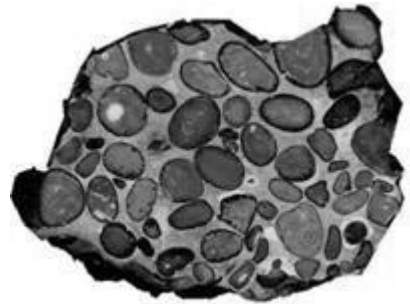
See pictures on back cover

Puddingstone, witches and a safe game of cricket...

As we know, Nomansland was named because the Abbeys of St Albans and Westminster couldn't agree where their common boundary was – each laying claim to Nomansland Common. The argument was settled and in 1429 a puddingstone was put in place to mark the boundary. It now marks the boundary between Wheathampstead and Sandridge.

Unfortunately the stone has, over the years, been covered over and the little that is visible is a danger to cricketers as it is located in the outfield. It is also very difficult to find. Our cricket club has been doing very well recently and they are moving up the league. Unfortunately the pitch will not reach the required standard which may prevent them from progressing. This is partly because of the stone.

The club would like to move the stone further along the parish boundary towards the road so it is more visible and no longer a hazard. It is an historic object so we need the support of the St Albans senior archaeologist and, of course, Sandridge Parish Council. The first problem is to find out just how big and heavy the stone is!



This distinctive rock is largely confined to Hertfordshire. Despite a superficial similarity to concrete it is entirely natural and derives its name because it resembles Christmas pudding. **Hertfordshire puddingstone was credited in local folklore with several supernatural powers, including being a protective charm against witchcraft** – it was sometimes referred to as **Hag stone** or **Witch stone**. Parish records from Aldenham relate that in 1662 a woman suspected of having been a witch was buried with a piece of it laid on top of her coffin to prevent her from escaping after burial. It is also used for jewellery and milling grain. It is sometimes referred to as **Growing Stone** because farmers believed it grew in fields.

Puddingstone is a conglomerate sedimentary rock composed of rounded flint pebbles washed out of chalk beds over 60 million years ago, transported to beaches where they were rounded by wave erosion and graded by size. A lowering of sea levels and general drying drew out silica from surrounding rocks into the water immersing the flint pebbles. Further drying precipitated the silica which hardened around the pebbles trapping them in the matrix. The result is that the rock is uniform and breaks straight across the pebbles giving a pleasing surface that can be polished for decoration.

Have you got some in your garden?

Credit Union Customer Centre in Wheathampstead?

Credit Unions exist to provide simple, low cost and flexible loans with none of the exploitation or expense of pay day loans and other high risk alternatives. They also provide a savings opportunity for members who invest in them.

Credit Union is a cooperative that is owned and controlled by its members unlike banks and other financial institutions. Each Credit Union is operated locally by volunteers. Investment is needed to provide money for loans and there is a dividend payable agreed by members when there is sufficient disposable surplus .

The St. Albans District Credit Union has been running for eleven years and has over 1000 full members plus 450 junior members. It has loaned out over £1.5 million. It is now proposed to have a customer centre in Wheathampstead serving this community. Support and training of volunteers will be provided free by St. Albans CU. All that is needed to achieve this is a regular part-time meeting place that could afford privacy for customers, with the addition of volunteers to administer and savers and customers.

Can you help please?

If you can, the contact person is Colin Metcalfe, the Chairman of St. Albans and District Credit Union by email on colinp.metcalfe@btopenworld.com

For any other queries please talk to a STADCU volunteer on 01727 859135 or go to their website: www.stadcu.org

Picture shows the Bishop of St Albans signing-on and two directors of CU



Much Loved Tree at Risk

A beautiful Red Oak tree in Rectory Meadow will probably have to be felled despite having a Tree Preservation Order on it. The tree is seriously infected with three different types of fungus, two of which are likely to topple the tree. We regret having to take this action but we have to protect local buildings and residents. We will, of course, find a suitable replacement. We are currently awaiting confirmation from the District Council's arborist.



Wheathampstead – thank you for recycling!



Thank you for doing your bit and for helping the District move closer to its target of 60% recycling by 2015. Recycling more and reducing landfill is good for the environment and saves money. It costs households £90

for each tonne of waste sent to landfill. So more recycling means more to spend on other council services. Please keep up the good work by:

- **Recycling more plastics**
- **Recycling all food waste**
- **Putting your cardboard in with your paper waste**

Why the changes for cardboard? Councils in Hertfordshire have been asked to stop sending cardboard to their composting facility. This is because it was contaminating the quality of the compost which means much of it has to be sent to landfill. This is why we are now asking you to put cardboard in your recycling box with your paper. To remind you, we will be putting 'NO cardboard please' stickers on all green waste bins.

Struggling with cardboard? For advice on what to do with additional cardboard or large sheets visit www.stalbans.gov.uk/wasteandrecycling or call us on 01727 819285 or email wastemanagementservices@stalbins.gov.uk. Look out for your complete guide to recycling in St Albans District,

Wheathampstead wins five more awards



For a number of years Redbourn has taken the title of Best Parish in the **St Albans and District in Bloom Awards**. This year however, the honour goes to us. The judges made particular mention of our balance between sustainability and keeping open areas neat and tidy. The photograph shows our Clerk, Julia Warren, receiving the award from Cllr Brian Gibbard Deputy Mayor of

St Albans. We also won a Highly Commended award for the work volunteers have been doing on **East Lane car park**.

In October the Herts CPRE (Campaign for the Protection of Rural England) held their annual awards ceremony with Sir Andrew Motion (President) as guest speaker. They presented a **Rural Environment (Commendation)** award to the railway platform team citing the project as

"...an outstanding outdoor museum run by enthusiasts for everyone...". The photograph shows David Johnston (Chairman of the Parish Council and project leader) collecting the award from the Chairman of Herts County Council, Richard Smith.



On 24 October the Mayor's Pride Awards 2013 took place at the Alban Arena. Wheathampstead Parish Council was extremely proud to be a finalist in the **Inclusive Communities Award** category (nominated by the WDPS). Pictured: Julia Warren and David

Johnston at the ceremony. **The Mayor's Recognition Individual Award went to John Burgess** for his contribution to improving the street scene in Wheathampstead and St Albans City Centre. The photograph is of John receiving the award from the Mayor, Annie Brewster.



theWI

Arts and Crafts

Visit our new shop for that
Special Occasion Gift
plus WI publications and books

Open 9.00am – 1.00pm
Hertfordshire Women's Institute
County House, 29 High Street
Wheathampstead AL4 8BB
Tel: 01582 834010



Will Writing

IHT Planning Trusts LPA



Affiliate member of the Society of Will Writers

**Call Rob Howes
01582 833778**

SOPRANO SOLOIST

Linda Wener

To sing at: Weddings
Funerals
Concerts

Extensive repertoire. Professionally trained

01582 833 500

www.SoloSoprano.co.uk

email: linda@solosoprano.co.uk

RJ Spiers Carpentry

Making Wood Work

Tel: 07979 225 096

- Kitchens
- Doors
- Flooring
- Fencing
- Decking

**City &
Guilds
Qualified**

Fenlon & Co

YOUR LOCAL ACCOUNTANT

- Self Assessment tax returns
- Accounts for self employed
- Payroll management
- Accounts for Ltd Companies
- VAT returns

6 High St. Wheathampstead, AL4 8AA
Tel: **01582 831234** day;
01727 759334 eve.

FOR HOLIDAYS THAT WILL CHANGE YOUR LIFE.

CONTACT THE AFRICA
SPECIALISTS.



AFRICAN HOLIDAYS

t: 01582 766 122

e: info@2by2holidays.co.uk

www.2by2holidays.co.uk

Rainbow House Nursery



We cater for all children from 3 months to 5 years,
We are open 50 weeks of the year between 8am and
6pm.

We offer very competitive rates for our all inclusive
service with a discount for a full time place, and a
10% discount for siblings.

Please feel free to contact us and arrange a visit on
01582 831991

Croft Farm Kennels & Cattery

01582 832071

Alan & Tessa Reason
Croft Farm, Cherry Tree Lane, AL4 8HP
www.CroftFarmWheathampstead.co.uk

Wheathampstead & District Preservation Society



*We work to protect
all that is best about
our village from harmful
development and encourage the
preservation of our countryside*

**Please join – the more members we have,
the louder our voice – it only costs £5**

For more info or to join us, visit
www.wheathampsteadpreservation.org.uk



Daytime Zumba classes
in Wheathampstead

Wednesday 09:30 - 10:30

Hill Dyke Community Centre
Hill Dyke Road AL4 8TU

T 07971 000562
E zumba@adrenaline.me.uk



Rebecca Clark

NAIL SALON

NOW OFFERING A FULL LIST OF BEAUTY TREATMENTS
INCLUDING FACIALS & MASSAGE

WARM YOURSELF BY THE LOG FIRE WITH A GLASS OF
PROSECCO WHILST INDULGING IN A SIGNATURE MANICURE OR
PEDICURE

OUR BRAND NEW SALON IN OLD WELWYN OPENS IN
FEBRUARY 2013! 'REBECCA CLARK LUXURY BEAUTY &
INTERIORS' OFFERS THE BEST IN BEAUTY
TREATMENTS AND INTERIORS INCLUDING A
STUNNING LIGHTING COLLECTION ALL HOUSED IN A
STUNNING 15TH CENTURY HOUSE IN THE CENTRE OF
WELWYN VILLAGE

ELEMIS – HD BROWS – ORTIGIA – SHELLAC – BIO SCULPTURE –
CHANEL – ESSIE – LASH PERFECT
IVY COTTAGE – 2 CODICOTE RD – WELWYN – AL6 9NB
WWW.REBECCACLARKLUXURYBEAUTY.COM

The Old Bakery Carpets

3 Station Road,
Wheathampstead, AL4 8BU
Tel: 01582 831999
www.hertscarpetts.co.uk

**Carpets, vinyl and wood
floor coverings,**
all fitted at
competitive prices



Absolute
CLEANING

- Oven Cleaning
- Carpet Cleaning
- Domestic Cleaning
- Tenancy Cleaning



Let us take care of your cleaning needs
Call us now for a free quote on:

01582 809 166 or 0788 376 7270

absolutecleaningservice.co.uk



Mark Barnes – Rider
Electrical Services
2 Dyke Cottages
Dyke Lane
Wheathampstead
Herts AL4 8EN

Domestic – Commercial – Industrial
Electrician

- New Fuse boards
- Power supplies to outbuildings
- Telephone/Network points
- 3 phase supplies
- Lighting scheme upgrades

Part 'P' Registered & Fully Insured

Local Friendly & Reliable Service

Tel: 07775 591 698

Email: Mark@mbre.co.uk

fall in love with your garden



**jackie
gough**
GARDEN DESIGN
design | build | planting

t: 07815 851212

jackiegoughgardendesign.co.uk

 **cuddly cat**
feeding

We feed your cat in its own
home while you are away.

You save money and
return to a happy pet!

Visit Once/Day - £6
Visit Twice/Day - £10

01582 629961

07952 733972

www.cuddlycatfeeding.co.uk



Voytek Computer Service

... your local computer expert since 2005 ...

e-mail: service@voytekcomputers.co.uk

<http://www.voytekcomputers.co.uk>

23 High Street
Wheathampstead



Tel/Fax **01582 622933**

Confident with your camera?

Are you baffled by buttons, discouraged by
dials, flummoxed by F-Stops?
Then come along to one of Ian's photography
workshops and learn how to get the best out of
your camera.

Affordable - local - accessible to all

Unleash the photographer in you!

Call Ian or Emma for more info and dates:
01582 469003

IAN SCOTT PHOTOGRAPHY

COMPLETE GUTTERING SERVICES

GUTTER CLEARING,
REPAIRS & REPLACEMENT
NEW UPVC FASCIA
INSTALLED, REPAIRED OR
WASHED DOWN

RELIABLE & EFFICIENT SERVICE
01582 831651 / 07941 437504
www.completeguttering.co.uk
ALL WORK GUARANTEED



Jessamine Motor Company Ltd



Servicing & Repairs
MOT Testing
Air Conditioning Systems Serviced & Re-gassed
Tyres, Batteries & Exhausts
Diagnostic Fault Code Reading Equipment
Quality Used Car Sales

15 High Street,
Wheathampstead.
AL4 8BQ

Tel: 01582 832212

www.jessaminegarage.co.uk



WHITE HOT VANS.COM

Locally based supplier
of brand new vans to
skilled tradespeople.
Always cheaper than a
franchised main dealer.



 @whitehotvans
 /whitehotvans

Call us on 01582 484 885
www.whitehotvans.com



JOHN
CURTIS

moving with the times

01582 839200

www.JOHN CURTIS.CO.UK
VILLAGE AND COUNTRY HOMES



We supply ...

...superior quality kitchens

...amazing designs

...exceptional customer service

..and yet still manage to be highly competitive

01582 834033
www.verulamkitchens.co.uk

Showroom: Unit 2 Beech Hyde Farm,
Dyke Lane, Wheathampstead, Herts, AL4 8EN.

Life & Careers Coaching

Is there anything in your life which you would like to improve? Would you like to have more fun? Improve your career? Earn More money? Would you just like to be happier?

Norman Whitwood Life Coach
Wheathampstead 01582 833 360



www.lifeandcareerscoaching.com

Youth News

Four Wheathampstead Schools Sing Together

There was an excellent turnout, particularly by Wheathampstead, at St Albans Abbey on Sunday 20th October for the Civic Service. The service was attended by the Lord Lieutenant, our Mayor (Annie Brewster) and local dignitaries. However, the highlight for many was the children's choir: four schools singing together.

Apparently Annie Brewster had mentioned to Richard Banham that she wished she could have the village children singing something stirring, like 'Zadok The Priest', and Richard said that Alexander L'Estrange, world-renowned local composer, had just composed such a piece – and it took off from there. Alexander set a version of the mnemonic 'poem' which names all the English monarchs from William the Conqueror to the tune of 'Thine be the Glory' ... bringing in a verse each of Rule Britannia and the National Anthem ... leading into a summary of the works of Handel during the famous build up to 'Zadok the Priest' ... and ending with a touch of the 'Hallelujah Chorus' from the 'Messiah'. He could hardly have crammed more into the eight minutes if he'd tried!



Elizabeth I



James I



James II



William III



George II



George III



Victoria



Edward VII



George VI



Elizabeth II

Four children's choirs from **Aldwickbury, Beech Hyde Primary, St Albans Girls Preparatory and St Helen's Schools** all learnt the piece separately. They then came together at 9.30 on the Sunday morning to go through it 'loads and loads of times', according to one of the singers, Henry Jaques.

The performance itself was a triumph. My favourite moment was the whole choir doing 'jazz hands', but the final chord when they all raised their arms brought a tear to more than a few eyes!

The Mayor summed it all up beautifully:
"The musical monarchs was stellar. And to think all those children now know the kings and queens of England by rote. That's a major contribution to encouraging a feel for the continuities of history."

By Susan L'Estrange (relation)

Herts County Council Plans to Develop a Secondary School

Your Parish Council is very keen to see a fourth secondary school for Harpenden and the villages. The shortage of secondary school places has been a problem for village families since the closure of Wheathampstead Secondary School in 1989. But the recent proposal by Hertfordshire County Council to purchase land between Wheathampstead and Batford to build a school has raised a number of concerns.

Consultation

The County Council has a commitment to *“engage parishes at an early stage so that they can help shape strategic thinking and develop a consultation forward plan”* (St Albans and District Parish Charter). Despite this, your Parish Council has had no input into the research or analysis of potential school sites, even though two of them are either wholly or partially in our parish.

Why are we concerned about the site in Batford?

If the County Council had consulted us about Site F (Lower Luton Road at Batford) we would have highlighted the Parish Plan and the National Planning Policy Framework, both of which prioritise the prevention of urban sprawl. The area most vulnerable is the area of Green Belt between Wheathampstead and Batford, where just three fields separate the two settlements. St Albans District Council has also long held the view that this important piece of land, which has both Green Belt and Landscape Conservation protection, provides a critical buffer. There is already pressure to develop the fields back from the Lower Luton Road and any encroachment on the fields between Wheathampstead and Batford will increase this pressure further. The CPRE (Campaign for the Protection of Rural England) also supports this view. We have written to St Albans District Council saying that we believe that a choice of a new secondary school site should form part of the District Council Local Plan.

Your say

Hertfordshire County Council will be holding a consultation that will look at all the options available for a new secondary school site. This is an initiative that the Parish Council welcomes and we will give the County Council every assistance in publicising this event.

Continued on p17...

We are also deeply concerned about the current volume and type of traffic travelling along the Lower Luton Road. It is narrow and winding in places, and already carries a high volume of local traffic, heavy goods vehicles and a significant volume of airport traffic. Much of this uses it as a shortcut between the A1(M) and M1 motorways. The concern is that the additional traffic generated by a school of 1,500-2000 pupils and teachers would prove overwhelming at peak traffic times, and would result in traffic 'rat-running' in narrow single track lanes (such as Leasey Bridge Lane/ Cherry Tree Lane) to reach the school. It is also likely to force through traffic (airport/A1(M)-M1) onto other local roads. Although the County Council estimates that many children will walk to school, current evidence of term-time traffic in and around Wheathampstead indicates that a large number of children are driven to school and this trend is likely to continue. We are also concerned that the Lower Luton Road is currently deemed to be a "safe" road for children to walk to school.

What we have done?

We have written to Hertfordshire County Council expressing our concerns and our desire to have a much higher degree of local input into the choice of site. We have made Wheathampstead Memorial Hall available to them for a public consultation in December and are awaiting confirmation of the date.

HRH Queen Elizabeth the Queen Mother—plaque at Butterfield Road

On 5 December 1967 the late Queen Mum officially opened the school in Butterfield Road by planting a tree. Some time ago the sign commemorating this occasion went missing. Christine Field who lived in the village at the time was the prime mover in the move to replace the sign. This was finally achieved on September 30 with the help of the Parish Council. In a quiet ceremony attended by Mr Rose, whose late wife was a Parish Councillor at the time and whose late daughter gave the Queen Mum a bouquet, Jean Andrew who saw the Queen Mum do the deed, Audrey Freeman a resident at the time, Mrs Field and two parish councillors. Councillor Gill Clark's family home was just over the road, Councillor Niel Clements was just round the corner! Aably assisted by Councillor Clark's husband whose family lived in Lattimore Road at that time.

(Pictures on back page)

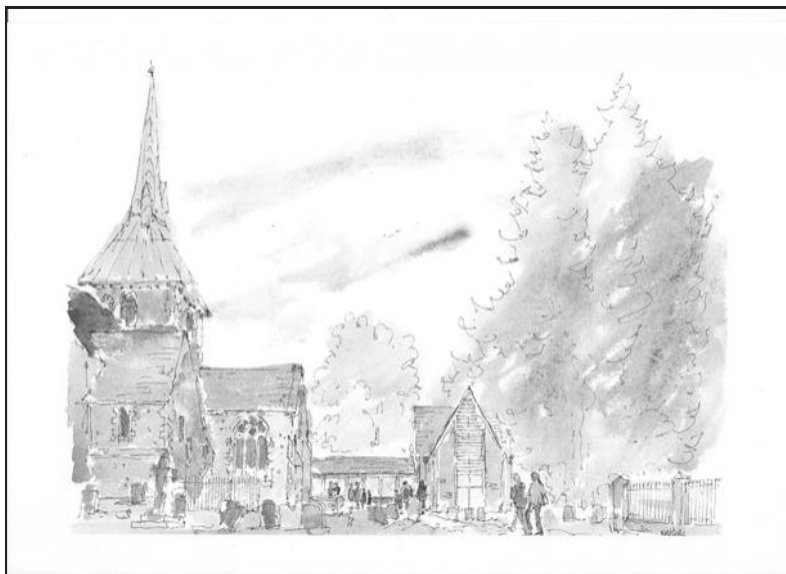
St Helens Church Centre

A building to serve our village in the 21st Century

History in the making! Wheathampstead is justly proud of its heritage - pre-Roman, Roman, Anglo-Saxon, Medieval – and we are still developing. At its heart is St Helen's church, Grade I listed and dating from the 13th century. Even older than the present building is its service to the community, a centre of worship and care to all at various stages of our lives.

This treasure in our midst exists primarily to serve God and the community, not only an historic monument but a living focus for all villagers.

Our 21st century challenge is that in order to serve the whole community and its present thriving and active congregations it requires that certain standards are met. Such an ancient building is not able to provide all that is needed in terms of space, access, plumbing...



Continued on p19...

To that end, as many are aware, a Planning Application has been made to build a new Church Centre in the NW corner of the churchyard. No major development has taken place at St Helen's for more than 150 years, and now is our opportunity to contribute in our own times to the history of the future, by providing a worthy first class addition.

The new building would provide additional meeting spaces, much needed in our village, together with up to date facilities allowing us to conform to current legislation and the needs of the less mobile among us.

In the event of permission being granted, that would be just the start. Funding would then have to get under way for this exciting and prestigious project before any actual building work could begin.

If you'd like to know more, please contact the Church Parish Office (tel. 01582 83401, weekday mornings, office@sth-stp.org).

'Celebrating our changing High Street'

Wheathampstead History Society will be hosting a celebration event on **Sunday the 26th of January 2014** to share the findings of 'The story of our changing High Street' project. This event will take place at the Memorial Hall, from 11am to 3pm, and everyone is welcome.

The project researchers are still gathering stories and photographs so if you, or someone you know, has anything else to contribute then please contact Sandra Wood, project lead, at wood.highstreetproject@gmail.com

Sandra Wood
Project Lead



Supported by

The National Lottery[®]
through the Heritage Lottery Fund



WHEATHAMPSTEAD COMMUNITY GROUP

Christmas Singalong

Come and join the annual
Wheathampstead Christmas Carol
Singalong
with the Abbey Gateway Orchestra
Thursday 12th December 2013 at
7.45pm
Wheathampstead Memorial Hall



**Master of Ceremonies: The Right Worshipful the Mayor of St
Albans City & District Councillor Annie Brewster JP**

Refreshments: tea, coffee, hot punch and mince pies

Entrance is free but there will be a retiring collection in aid of
Wheathampstead Community Group



	<p>CITIZENS ADVICE BUREAU Advice sessions on THURSDAYS 10 am—12 noon in the Green Room at The Memorial Hall</p> <p>Please telephone (01727) 811118 to make an appointment or drop in on the day</p> <p>Charity registration number 1041830 Company registration number 2969165 (limited by guarantee)</p>
---	---

Introducing your Parish Council

In the last issue we presented 6 of your Parish Councillors. Here are the remaining 6—be sure to say hello when you see them



Iain Begg. I moved here in 2004 to restore a Grade II Listed building later to become the Broomhouse Gallery coffee shop and art gallery. I immediately immersed myself in local affairs, becoming chairman of WEB before being elected to the Parish Council in 2006 which I chaired for three years.



Annie Brewster—Vice Chairman . I first moved to the Parish when I was 10 years old. I have worked in advertising/PR and was an international athlete before joining the Parish Council in 2007. I am currently the Mayor of St Albans City and District with the themes of young people, sport, heritage and tourism.



Niel Clements. I came to Wheathampstead with my wife Angela in 1968. I became a Parish Councillor in 1973, taking a special interest in highways and safety. Later I introduced the first disabled parking and zebra crossing in addition to a 20mph zone. I was a founder of the Association of Local councils,



Steve Haynes . I worked in the film and TV industries for over 40 years and moved here in 1998. My children went to Beech Hyde and Sir John Lawes and are now at university. I am involved in many council events and working groups. Now retired, I enjoy “giving something back” to the village.



Tessa Reason. I’m proud to live in Wheathampstead and, having chaired the Jubilee Celebrations and Music on the Meads, particularly enjoy events which bring the whole community together. I have three grown up children and live on a farm with my husband Alan where we run a stables kennels and cattery.



Judy Shardlow. A resident for over forty years I attended village primary and secondary schools. I have a particular interest in planning issues affecting Wheathampstead, particularly preservation of the Green Belt; I am also a strong advocate for having local school places and sustainable school transport. My two children attend local schools.

Your Parish Councillors

Iain Begg	7 Old Rectory Gardens, AL4 8AD	623355
Annie Brewster (Vice-Chairman)	Fairways, Firs Drive, Gustard Wood, AL4 8LB	01438 832255
Gill Clark	16 Tudor Road, AL4 8NW	832579
Niel Clements	65 Brewhouse Hill, AL4 8AN	833239
David Davies	3 Cherry Tree Lane, AL4 8HP	821350
Linda Halford	35 Marshalls Way, AL4 8HZ	760593
Steve Haynes	65 Necton Road, AL4 8AT	629327
David Johnston (Chairman)	9 Brewhouse Hill, AL4 8AN	629411
Tessa Reason	Croft Farm, Cherry Tree Lane, AL4 8HP	832071
Judy Shardlow	28 Dale Ave., Gustard Wood, AL4 8LS	01438 833858
Paul Wilby	35 Nurseries Road, AL4 8TP	834549
Peter Woodhams	54 Butterfield Road, AL4 8QH	832541

Clerk to the Parish Council: Julia Warren **Tel: 832541**

Parish Council Office: The Memorial Hall, Marford Road, AL4 8AY

e-mail: info@wheathampstead-pc.gov.uk **web site:** www.wheathampstead-pc.gov.uk

e-mail councillors using name.surname@wheathampstead-pc.gov.uk

e.g. david.johnston@wheathampstead-pc.gov.uk

Other Councillors

Annie Brewster (District)	See Above	See Above
Gill Clark (District)	16 Tudor Road, AL4 8NW	832579
Nigel Huddleston (District)	16 Waddling Lane, AL4 8FD	833378
Maxine Crawley (County)	14 Saberton Close, Redbourn, AL3 7DS	793760

Member of Parliament: Rt Hon Peter Lilley (1 Place Farm, AL4 8SB) **Tel: 834344**

Police – In an Emergency Only: 999

To report a crime or incident:

Tel: 101

To discuss a local issue contact our village officers:

Tel: 101

Ask for PC1848 **Arthur Wilkes** or PCSO 6678 **Jo Heighes** (voicemail available)

For a rapid response traffic warden: Tel: 01727 845283

Service Numbers

To report highways matters e.g. salt bins, potholes, lights, road signs, abandoned roadwork signs, etc. **0300 1234 047** or on-line www.hertsdirect.org/highwayfaults

For recycling collections, fly tipping and other local services contact
St Albans District Council Main Number: **01727 866100**

For all of the above and more goto
www.stalbans.gov.uk and select Local Information Service

I ♥ MY
Award winning!
Pharmacist

Ask about our **FREE!**
Prescription Collection & Delivery Service

manor pharmacy

health • beauty • prescriptions • advice

MAKE MANOR PHARMACY YOUR PHARMACY

Telephone: 01582 832 102

www.ManorPharmacyGroup.co.uk



Edwards Associates
INDEPENDENT FINANCIAL ADVISERS

Call **Rob Howes** for fee
based Independent Financial
Advice in the village

The Old Presbytery, Marford Road,
Wheatthampstead, Hertfordshire, AL4 8AY



TELEPHONE: **01582 833778**

E.MAIL: rob@edwardsassociates.co.uk

WEB: www.edwardsassociates.co.uk

Edwards Associates is an appointed Representative of Sesame Ltd
which is authorised and regulated by the Financial Services Authority

Aldwickbury Clinic

Adults Babies Children

Claire McKenna

Registered Osteopath
Paediatric Craniosacral Specialist



07725 555105

www.aldwickburyclinic.co.uk

7 Long Butlers, Harpenden, AL5 1JF

Mr Green

Landscaping and Lawncare

Professional, local and friendly.

For a free quotation call:

07539 441 055

www.mrgreenlawncare.co.uk



Suzuki styled piano lessons
with Music Theory
from the age of 4 years old

Claire S Partington

BA(Hons)Music

MEMBER INCORPORATED SOCIETY OF MUSICIANS

C# Music Tuition

Building Sound Foundations

claire@csharpmusic.co.uk
www.csharpmusic.co.uk
01582 832800



If you are thinking of selling or letting your property now
or in the near future, choosing the right agent shouldn't
be left to chance.

Master Moves prides itself on being proactive and giving
realistic advice.

Please do not hesitate to contact us on:
01582 831200.



Archery Club members gather to remember a former member and install a bench in his honour on Folly Fields.



Burying the power cables on the Meads. The drill head emerges having bored a hole 4 metres deep under the river



Residents and Councillors meet to reinstall the Queen Mother's plaque to commemorate the opening of the Butterfield Road school in 1967.